



September 2023



Welcome to Connexions!

A place to share special stories, events, achievements and celebrations from around the Connexion.

Please send photos and descriptions to reception@methodist.org.nz



Remember in your Prayers

It is with great sadness that I inform you that Rev John Grundy passed away last Monday 14 August.

He served as a minister in the Methodist Church from 1955-1968 at Stoke in Nelson, Carterton in the Wairarapa and Woodlands St. Church in Timaru. Following that he was Director of Christian Education based at Taranaki St in Wellington and also spent time with the church in Melbourne.

Any messages of condolence can be sent to his daughter Jeannette Grundy at jeannette.grundy@gmail.com

It is with shock and sadness that we have been advised of the death of Karen Harris. Karen and Ian were travelling overseas and during the flight Karen suffered a significant medical event. Despite the best efforts of cabin crew and medical assistance on board, she was unable to be revived and died. Please keep Ian and his family in your thoughts and prayers.

We will advise in due course where messages of condolence can be sent and any funeral details.

I would like to advise the connexion of the death of Dr. Owen Prior. Owen died on the 17 August at Lansdowne Park, Masterton, aged 95. Owen was a pillar of the Masterton and Wairarapa community and active in the life of the Methodist Church. Owen was actively involved with the Wesley Methodist Church, then following Wesley combining with Knox Presbyterian - with St Lukes Union Church in Masterton. He served on Parish Council, Synod attended Conference. He served the connexion being on the Board of the Methodist Children's Home in Masterton, and then for fifty years the Wellington Methodist Charitable Trust Board, including 7 years as chairperson.

His service in the community was first as GP in Masterton before becoming a Surgeon and Acting Medical Superintendent at Masterton Hospital. He was of considerable assistance to St John's in the Wairarapa, and his service to St John's was recognised in 1981 when he was admitted into the Order as an Officer.



Owen is survived by his two daughters, Anna and Jane. Seven grandchildren and 10 great-grandchildren.

We give thanks for the life of Owen, who has left Masterton and the Wairarapa a better place for his involvement.

It is with sadness that I inform the connexion of the death of Lani Tupu this afternoon following a short illness.

Lani held office as the Vice President of Te Haahi Weteriana o Aotearoa in 1986. He was involved in leadership in the Wellington Synod area and a member of the Wellington Methodist Parish. After retirement Lani and Beryl moved to the Wairarapa where they worshiped with the Samoan Methodist Church at Crossway.

Lani died well with a wonderful family gathering around him and singing. His funeral will be held on Saturday 16th September, 1pm in First church Martinborough with a burial to follow. Details of where messages can be sent and the funeral will be circulated in the next few days.

It is with sadness that we advise you that Barbara Aspell-Wallace, (wife of Rev William(Bill) Wallace ret), passed away in Christchurch. Barbara was a beloved wife and mother.

Barbara was a Language teacher, fabric artist, storyteller, in her 85th year. Beloved wife of the late Rev. Colin Paxton Aspell (UK), and of Rev. William Livingstone Wallace (Christchurch).

A funeral service for Barbara will be held at Durham St Methodist Church, 309 Durham Street, Friday 15 September at 11.00am, to be followed by a private cremation.

Our love and prayers go to Bill and his family. Messages to Monica and Liza: aspellmclellan@hotmail.com or Bill Wallace, Wesley Care, 91 Harewood Rd, Papanui, Christchurch 8053.

The link for the live broadcast and subsequent archive is. <https://vimeo.com/864226757>



Sharing links to Touchstone

Now that we have transitioned from a printed publication to online only, I encourage you to share the links to the latest edition of Touchstone in synod and /or parish communications.

For the link to the full publication [Click Here](#). Alternatively, for access to the reduced PDF version of Touchstone, (intended as a printable option for readers unable to access the online link) [Click Here](#).

I welcome your feedback.

Ngā mihi nui

Ady Shannon, Editor Touchstone

Email adys@methodist.org.nz

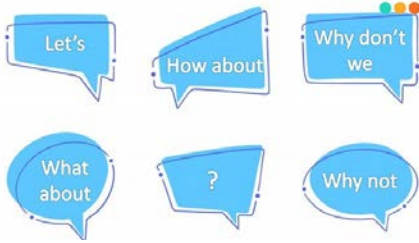
Phone: 021 209 9702





Lunchtime webinars – Feedback requested

Trudy Downes
Kia ora koutou



The idea was suggested to the Connexional Office to hold some short conversational webinars to give people ideas, tips, tricks and help on how to use some of the tools and information that we have available to us, or to understand how current events impact on our Church.

Before we start these conversations we need to know if people are interested!

[CLICK HERE to provide feedback](#)



Exciting news from Motueka

Janet Marsh, Minister at St Andrews Motueka Uniting Church

Earlier this year, St Andrews, where I am minister, was involved in hosting Turkish refugee families in our town. That event which took place over several days was dubbed The Welcome Mat. It was the first of its kind in Aotearoa NZ. It is now being considered at the

UN for an award - we never imagined this!

Our small but strong team from New Zealand will be attending the United Nations General Assembly (UNGA) 78th Session on the Sustainable Development Goals 2030 next week. As well as one of New Zealand's distinguished award winning journalist speaking at a panel during the conference, we have also been nominated for our work on, 'The Welcome Mat' project. This is where we need you. We are asking all our partners and friends to vote for us for the SDG People's Choice Award that has been introduced as a new category this year. To vote visit: <https://unga-conference.org/pioneers-in-sdgs-awards-nominees/> and enter 27 to vote. If you don't already know about The Welcome Mat you can read more [here](#).



Gifted – gifts of love

Christian World Services

In October CWS will send you a copy of its new catalogues of gifts for family and friends. There are 24 gifts to choose from – gifts act as a donation to one of our partners. You can choose a beautiful, printed card or ecard to accompany your gift or no cards at all. Gifted cards work for Christmas, birthdays or any special occasion.



World Week for Peace in Israel and Palestine

Christian World Services

CWS commends the resources prepared for the World Week for Peace in Israel and Palestine which runs from September 16-23.

This also marks the 75th anniversary of the Nakba (catastrophe). More information and materials can be downloaded from the [World Council of Churches](#).





Welcome to Tim

Christian World Service is delighted to welcome Rev Dr Tim Pratt as the new National Director.

Tim is an accredited Baptist minister who most recently served as the Maclaurin Lead Chaplain within the University of Auckland. Prior to that he researched and lectured at AUT University where he holds a PhD in Management, and a MBA. In tandem with his pastoral and academic pursuits, Tim has many years' experience serving at either a governance or management level within faith based organisations, locally, nationally and internationally. This includes ministries such as the Boys' Brigade New Zealand (Iconz/BBNZ), The Global Fellowship of Christian Youth, and The Interchurch Council of Hospital Chaplaincy.

He has specialised in leading a refresh of these mature service-oriented organisations that focused on developing their strategies, structures, and finances so they continue to respond effectively and efficiently amid an everchanging world.



Christmas Appeal

Christian World Services

“He has filled the hungry with good things” Luke 1:53a

Share Food this Christmas. In Sri Lanka, small farmer Somawathie lives close to elephants and grows enough food to survive. But with climate change and an economic crisis, can she continue?

CWS is preparing worship resources and other materials for you to use in services and groups through Advent and Christmas. The resources feature five of our partners, including Monlar the Movement for Land and Agricultural Reform in Sri Lanka.

CWS is sending out the order form, brochure and posters this week. It is simple to order online. If you do not get a copy, please contact Jordyn on 0800 74 73 72 for your own copy.

Please pray for this year's Christmas Appeal as we work together to share God's love for the world. More information will follow shortly.



Climate Justice Framework

Christian World Services

CWS welcomes the new position paper, the ACT Alliance Climate Justice Advocacy Framework 2023-26.

This Framework and the work of our partners informs our climate justice advocacy. Our partners are helping people learn new techniques, managing scarce water supplies and preparing for more frequent and more damaging disasters – like last year's floods in Pakistan.

CWS encourages people to ask political candidates questions about Loss and Damage. For example how does your party plan to assist countries who have contributed little greenhouse gases to the planet yet are suffering its worst effects? Are you willing to increase government aid support to our Pacific neighbours so they can adapt to the climate challenges and rising levels of poverty since the pandemic?

Please send any feedback to gillian.southey@cws.org.nz.





Let's Stand Up for the Ocean

Christian World Services

For centuries Indian fish workers have made a living from the sea but now they are facing challenges from every direction.

Many have been forced to move inland to make way for huge power plants and large-scale industries like shrimp farms. Understandably most coastal people want to stay close to the sea and support their families.

CWS partner the Legal Aid to Women Trust is part of a network that campaigns for the coast. Fish workers gather data to use in legal hearings. Their leaders make the case for the ocean and the people who depend on it for their survival.

Let's Stand up for the Ocean tells how Muthamizh selvi and other women like her are learning new skills and starting small businesses on the edge of the climate crisis in the hope they can survive. Your gifts to the Ocean Appeal will help them find new livelihoods and campaign for the sea, the source of life.

Methodist-Catholic Joint Service of Repentance and Reconciliation

Rev Dr Trevor Hoggard, Orakei parish and co-covenor of the Methodist-Catholic Dialogue NZ

Wednesday 25 October at Takapuna Methodist Church, Lake Road, Takapuna, 7.30pm.

The Methodist-Catholic Dialogue Committee has resumed meeting again after the disruption of Covid.

We concede that ecumenism has slid down the agenda for many churches today, but we continue to believe that our Lord would wish us to be reconciled and able to work more closely together as a living witness to an increasingly fractured world that reconciliation across long-standing differences is achievable.

The most recent report published by the Methodist Roman Catholic International Commission, God in Christ Reconciling, offers the church a Liturgy for Repentance and Reconciliation which is to be used at a joint service held on 25 October 2023 at Takapuna Methodist Church to which all Methodists and Catholics are invited. Come along and help us deliver a message of hope for better days ahead to our respective churches and to our society.

Omapere Community Church
Freeze Cottage

Are you a preacher?
 Have a God-given gift or a testimony to share?
 Would you like a free accommodation break in the peaceful Hokianga?

Freeze Cottage, situated in the beautiful coastal village of Omapere, is a beautiful 2 bedroom accommodation with a fully equipped kitchen, lounge, and bathroom. It is perfect for a weekend getaway or a long-term stay. The cottage is surrounded by lush greenery and offers stunning views of the sea.

About us
 Omapere Community Church is a small rural church with a congregation from a range of denominational backgrounds, operating under the umbrella of the Methodist Church of New Zealand.

What are we seeking?
 Preachers willing to take full services, prayers, bible readings, hymns/songs/choruses, as well as the message. Our services usually last 45mins. You join us for informal fellowship afterwards.

What are we offering?
 • 2-3 full days (weekend) - 2 nights accommodation.
 • Two consecutive services and possibly some pastoral care. 16 nights accommodation.
 • Supplies for longer placements welcome.

Freeze Cottage Accommodation
 We can host up to 5 guests in our new cottage that has 2 bedrooms, 1 office and 2 bathrooms.
 Harbour views with spacious deck.
 Fully furnished, fully equipped kitchen, linen, iron and cleaning provided.

Contact Lyella Ambler
 omaperecommunitychurch@gmail.com
 Mobile: 0276344264

Freeze Cottage Accommodation

Omapere Church

Free holiday accommodation in exchange for preaching one or two Sundays.

The Omapere Community Church, which has a strong Methodist heritage, has a small (15 – 20) but committed congregation made up of people of varying ages and denominational backgrounds.

A few years ago when one of the lay preachers left, rather than change to only having fortnightly services most members of the congregation decided to take a turn at leading a service. This has worked well but some asked to be relieved after taking a few services and so we decided to seek outside help.

Fortunately we are situated on the beautiful Hokianga Harbour which is a great place to come for time out. We were able to sell land and with the proceeds build a Parsonage which was opened in August this year. The plan is to use the Parsonage as outlined in the flyer.





Friendship Scholarship

Marie Smith

**FOR PACIFIC ISLAND GIRLS RESIDENT IN NEW ZEALAND
ATTENDING A NEW ZEALAND SECONDARY SCHOOL**

APPLICATIONS MUST TO BE RECEIVED BY 20 November 2023

Student will be in -

- In Year 12 or 13 during 2024
- Active members of a Methodist or Uniting Parish, within the Connexion of the Methodist Church of New Zealand
- New Zealand Citizens or have New Zealand Residency status

Information & Application Form on the Methodist web site

www.methodist.org.nz under – [Organisations](#) – [Methodist Women's Fellowship](#)

1. Completed Application Form- both sides of one page
 2. School Report
 3. School Reference
 4. Reference from the Church Minister are required
- References must be on one side of one headed A4 page

All documents must be sent together to: donmariesmith18@gmail.com

APPLICATIONS CLOSE: 20 NOVEMBER 2023



"gOD is good sometimes"

Climate Justice

On the 23rd of August, CJWG co-hosted a Talanoa session with Trinity and St John's Theological Colleges at Wesley Hall on a lecture by Dr Maina Talia from Tuvalu.

The theme of his lecture was, "gOD is good sometimes". He used the story of Noah (Genesis 6) as his text for his theological reflection but read it from a Tuvaluan lens. He invited his audience, which is us to think critically about this text and the image of God that is portrayed and to relate it to how the Tuvalu people are currently experiencing climate change as their island nation is slowly submerged under the seawater. Maina pleaded for large countries emitting CO2 to be accountable. It was good to hear someone speaking out of their own experience and context. To date over 4000 people have viewed this lecture on [YouTube](#). We invite you to take a look.

Vote for Climate Action billboards

Billboards have been created for the election campaign. They contain images of climate devastation in Aotearoa this year and contain the words "Vote for Climate Action". They don't promote any parties but the need to prioritize climate action. We encourage all parishes to consider placing one of these colourful billboards outside their church. They can be obtained from the website – www.voteforclimate.org.nz. All the details are there including the process for getting a billboard.

Looking for Resources?

Check out the Climate Justice page on the church's website. Watch out for the booklet to be published at Conference as a resource for parishes. Coming in 2024 is another Climate Justice calendar with theological reflections and examples of activities for individuals and parishes.

CJWG contacts:

Chair - Rev Siosifa Pole at siosifa@missionresourcing.org.nz

Secretary – Marion Hines at marionhines@xtra.co.nz

Feedback – cjwg.feedback@methodist.org.nz





Housing First Auckland Collective’s Māori-led strategy, Maiea, Tāiki E!

Lifewise

Housing First Collective, celebrates the launch of their very own Māori-led strategy on the 1st of September at Visionwest.

Housing First Auckland Collective (HFAC) which is made up of organisations from Tamaki Makaurau that work together to end homelessness: Auckland City Mission, Lifewise,

LinkPeople, Visionwest, and the Wise Group proudly launched Maiea, Tāike E!, on Friday, 1st of September. The event was hosted by Visionwest and attended by the different team leaders, funders, Kāupapa Māori leaders, peer support workers, kaimahi and whānau from across the collective. Hon. Marama Davidson, Associate Minister of Housing (Homelessness) was there too to speak at the launch.

A Te Ao Māori approach was adopted to put together Maiea, Tāiki E! HFAC acted as one in co-creating the said framework, led by the HFAC Backbone, facilitated wānanga, hui, kanohi ki te kanohi interviews with lived experience whānau and wide korero to ensure that the strategy encapsulated the diversity of ideas across the collective.



In the data from HFAC (since its launch in March 2017 to May 2023), 54% of whānau accessing the Housing First service are whānau Māori. This led them to realise that the over representation of whānau Māori require a whānau Māori-led approach in ensuring that wrap around support services offered to whānau Māori supports their journey towards whānau whakapuāwai: to flourish.

Maiea, Tāike E! is a name gifted by Matua Fred Astle, and which captures the function and responsibility of our HF team to take that ‘second breath’ and embrace the mahi that is to come to achieve the collective's shared determination, all from this very strategy that was nurtured from the very core of our service. This indeed marks the opening of a new chapter for the HFAC as the whole team embrace the challenge of ensuring that the essence of the strategy is fulfilled as soon as they left the venue.



Haehaetu Barrett, Lifewise CE summarised the significance of having a unified Māori strategy across the collective:

“Whakawhanaunga - coming together which is essential for survival; Kotahitanga - is the only way that the platform will happen - one voice, one movement; Kaitiakitanga – keeping each other safe” as she promises Māori whānau that “we will stand with you, beside, you, behind you, in front of you if we need to.. but we are here.”

View the e-book from this link:

<https://www.housingfirst.co.nz/our-mahi/maiea-taiki-e/>

Artwork was designed by Richard Turipa, one of our flourishing whānau Māori.





Thought provoking report by CPAG Housing experts

Lifewise

Shortage in affordable rentals and Immigration spike as top causes for the housing crisis in NZ.

In the research that was presented by Child Poverty Action Group (CPAG) housing experts, Greg Waite and Alan Johnson, in the latest CPAG Election 2023 series webinar, there is strong evidence that maintains that there is a stock issue for affordable rentals for low income, minimum wage earners. We may have seen an increase in new builds in our respective neighbourhoods, but they are targeting high income earners.

Less available affordable rentals:

- With an 8% population increase from the period 2018-2023, affordable rentals available for low-income
- families shrunk by 3.5%
- Available affordable rentals for the middle-income earners also shrunk by 1.3%
- Immigration spike
- Net migration for the year to June 2023 sees over 86,000 new entrants in the country
- The new emigrants would yield an estimated additional demand of around 29,000 dwellings

Tepora Apirana, Lifewise Regional Manager - Bay of Plenty also spoke about how Lifewise employs an iwi-led collaborative model in the implementation of the Housing First programme in Rotorua since 2019. The significance of keeping ties with Ngāti Whakaue as housing providers ensure that the needs of the most vulnerable whānau in the Bay of Plenty are met as Lifewise's mahi is centered on restoring families and keeping them together. Tepora shared the story of Theresa Shaw (video attached) who came through the Housing First service at a time when she struggled with drug addiction. Theresa's story demonstrates that Lifewise provides a safe and non-judgmental space where whānau can heal and be empowered, to be able to show compassion - to share the aroha and respect to the community that we serve. However, we acknowledge that as a charitable institution that helps to alleviate homelessness in the community, Lifewise cannot solve the housing crisis if the government does not do their share in increasing the supply of affordable homes.

Continuous increase of households in waiting list

Despite the Government's efforts to build its way out of the current shortfall in affordable rental housing, the public housing waiting list has stabilised at around 25,000 households to date with 43% of them include children. Almost 6,000 households are currently living in transitional housing - up from 4,400 in June 2021. Housing operating subsidies have reached \$4.1 Billion Annually including \$2 Billion in AS grants and \$1.5 Billion in income related rent subsidies. CPAG proposes that the population of state-owned social rental housing expands from the current 3.2% of the housing stock to 4% by 2030 and 5% by 2040. The build rate should be tied to the immigration policy setting to ensure people are not left homeless by rapid immigration. (attached Graph that shows the continuous increase in the number of households in government state-owned houses waiting list. [Source](#).)

What is the call to action of CPAG to the government?

1. A recognition that public rental housing has more than a residual role in the housing market - as the housing of last resort for the poorest New Zealanders.
2. An expansive ambition to lift the proportion of the housing stock which is owned by the State or Agents of the State as affordable rental housing.
3. A long-term plan to deliver this proportion which is based on a 10-year funding, development and procurement programmes.





4. Transparent and long-term partnerships with iwi/hapu, NGO's, local councils and developers/builders to build, operate and sometimes own this housing stock
5. A bi-partisan commitment to these programmes as recognition of affordable rental housing as a critical part of public infrastructure.

Watch the Webinar [here](#): CPAG: A WARM, SAFE, DRY HOUSE FOR EVER CHILD – WHAT NEEDS TO BE DONE?



Trinity Methodist Napier- Tongan Congregation 25th Anniversary

Trinity Methodist Napier

On September 3rd, 2023 a combine service was held at the Napier Trinity Methodist Church, bringing together the Napier Trinity, Tongan and Korean Congregations.

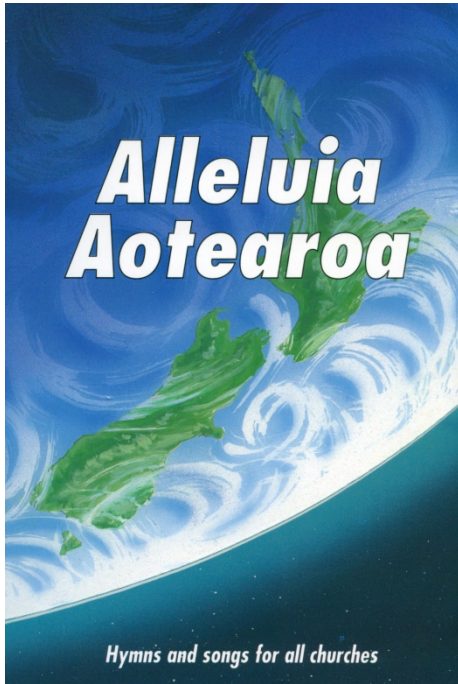
This event marked a significant milestone, commemorating a quarter - century since the establishment of the Tongan Congregation on August 30th 1998. In those early days, Reverend Epeli Taungapeau, overseeing the Napier Trinity Methodist Church, keenly observed the growing presence of Tongans within the Church. He understood it was an opportunity to establish a Tongan branch within the church. The previous week held as significant importance as we had the honor and privilege of welcoming back the founder Rev Epeli Taungapeau, to lead the combined service.

His presence also brought to mind his late parents, Uanisi and Tilisa Taungapeau, who were instrumental in the early days of our Congregation. He generously recounted treasured memories and reflections on our church's journey over the past twenty five years.



The Occasion was made more special by the presence of both past and current members of the Tongan Congregation. Steward Fatongia Ofa and Onani Lei, Distinguished guest, including Rev David Harding, The current Reverend for Napier Trinity Methodist church, Rev Lynne Firth, the former president of the Methodist Church of New Zealand, and Rev Kaumavae Minoneti from Gisborne Parish, along with Napier Parish Steward Joanne Gaudin, joined us in celebrating this 25 year silver Jubilee. It was a heartwarming event filled with a sense of unity and fellowship, followed by a delightful lunch.





Celebrating the hymns and carols of Aotearoa!

John Thornley, Wesley Broadway

Wesley Broadway Community Radio - In partnership with the Manawatu People's Radio (MPR)

4-part series of half hour podcasts featuring six hymns/carols from the four collections of the NZ Hymnbook Trust (NZHBT) – Alleluia Aotearoa, Faith Forever Singing, Hope is our Song and Carol our Christmas (the books are complemented by four CDs)

The six songs have been selected by Roy Tankersley and John Thornley, and include hymn/carol recordings not found on the four NZHBT CDs as well as hymns/carols on these CDs: e.g. Let Justice Roll Down, Nothing is Lost on the Breath of God.

Each programme is first broadcast on the weekly Wesley Broadway, Palmerston North programme on Manawatu People's Radio.

John Thornley acts as Host for the series.

The completed programmes run from August to December. These programmes are free

Send an email to Hugh Dingwall at Manawatu People's Radio: hugh@mpr.nz and he will send the podcast to you by email.

For further information contact John Thornley: john.gill@inspire.net.nz



Land Sunday-Season of Creation

Malvern Co-operating Parish

Season of Creation at Malvern Co-operating Parish celebrated with the first Sunday of bringing the Forest into the Trinity Church in Darfield. Two guest speakers Anthea Cridge and Theckla Barnhill spoke to us about their tribute to the Forests of Aotearoa New Zealand.

To celebrate the first Sunday which was Forest Sunday-this team of 4, 80 year old's dug the hole, planted the tree, watered it and put the stakes in!! Planted with love, care, attention to detail, strength and faith! A humbling moment to behold for all present!

The second Sunday-Land Sunday was celebrated by the 26 Sunday School children venturing out to the duck pond, and picking up the odd bit of rubbish, Though nippy, the children celebrated God's Creation of the Land.

Each Sunday is marked with a celebration of the Season of Creation this month!

Wilderness, River and the Blessing of the Animals to finish off this year's Season of Creation Month.





Kia tau te Rangimarie ki a koutou is a beautiful, gentle, spiritually enshrined sentiment; a sentiment that at once both implores and affirms the rightness of peace as the substantive basis of blessed and just relationships.

Dunedin Abrahamic Interfaith Group and Otago Tertiary Chaplaincy
Thursday 21 September 2023 (United Nations International Day of Peace) 6.45pm - 8.15pm. St. David's Lecture Theatre

It is widely used throughout Aotearoa by most faith based institutions.

This sentiment is thus offered by Māori into public discourses on how best to nurture and sustain peaceful and just communities, in which all may find a rightful sense of belonging and the opportunity to flourish and succeed. In this 20th year of the Peace Lecture it seems timely to ask just how reciprocal that sentiment is for Māori as tangata whenua in 2023” – Dr Jenny Te Paa Daniel.

Join us for our 20th Annual Open Peace Lecture featuring a conversation with Dr Jenny Te Paa Daniel and three panel members representing the Muslim, Jewish and Christian faiths. It will conclude with a question and answer session followed by supper at All Saints' Anglican Church.

All are welcome!



Week of Prayer for World Peace

Paddy Payne

15th – 22nd October 2023

This year the Week will be observed between 15th and 22nd October. A 12-page prayer resource has been produced by the UK organising committee with prayers, readings and affirmations from many faiths to use each day. Religious communities and interfaith groups throughout New Zealand are encouraged to celebrate the Week both in their own observances and together with people of different faiths.

Instead of producing a NZ version of the resource, this year it was decided to send out the UK material without any alteration. The UK organisers write:

This year the Committee has decided to distribute the Resource free. We wish to encourage as many people as possible to pray for peace in our troubled world. This year the Prayer Resource is expanded to 12 pages. It includes contributions from children and young people. The overall theme this year is 'Praying with hope in a troubled World'. Individual day themes include among others: reconciliation, families especially in conflict areas, those in power and peacemakers.

This year a special addition to WPWP is being set up in conjunction with the Iona Community and Alignment: Interfaith Contemplative Practices. There will be a digital 'calendar' for the eight days of the Week. On each of the days a 'window' is prepared and by clicking on it, you can listen to a talk and other items. The talks will be given by leaders from various faith communities. Full details are on the back page of the booklet.

Please use the booklet in its digital format or print out those pages you want to use during the Week.

We will also be posting the readings each day to this [Facebook page](#):





Congratulations to Palmerston North Methodist Social Services



METHODIST ALLIANCE

NGA PURAPURA WETERIANA

Carol Barron

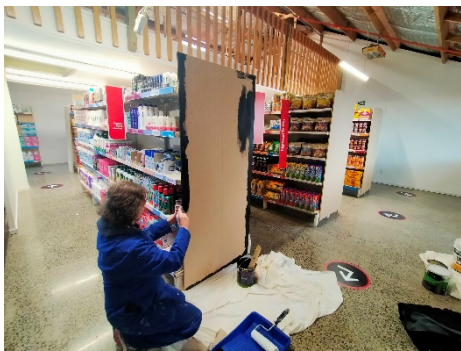
Palmerston North Methodist Social Services is the first Methodist Mission to have a social supermarket.

The Koha Kai Whare, opened on 15th August 2023, and is a partnership with Foodstuffs. A social supermarket is a more mana-enhancing alternative to the traditional foodbank. The social supermarket, Koha Kai Whare, opened on 15th August 2023, and is a partnership with Foodstuffs. People experiencing food insecurity are able to choose what they need themselves in a supermarket-style environment rather than being given a food parcel that may contain things they do not know how to cook, and may not meet their dietary and cultural needs. The social supermarket also provides wrap around social support services to meet the needs of the whānau.



Rik Te Tau, General Manager at Palmerston North Methodist Social Services, says, "It's personally important to me that young people see their parents shop, that they actually don't see their parents go in and beg for something. It's our right to have food. The social supermarket does not replace the traditional supermarket; as people can't walk in and do their weekly shop for free. It provides occasional food access relief for those who needed it and it means whānau can potentially put money aside for something else. It just takes away that financial burden slightly."

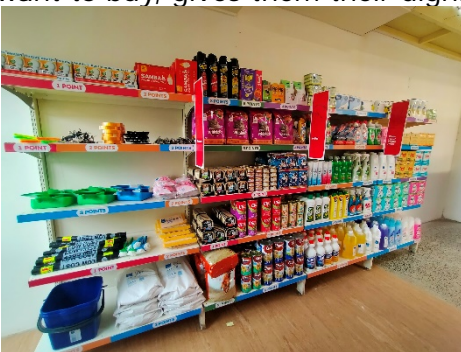
I visited the week before the social supermarket opened and at that time the whole team were pitching in with getting the supermarket everything ready to open. The Counselling Team Leader was painting, the Op Shop Manager, along with other staff were stacking shelves.



The old storeroom at Palmerston North Social Services now looks like a regular supermarket with fully stocked shelves, the only exception is that instead of prices on the shelves, there are points.

Whānau are assessed and allocated points – a large family could be allocated 75 points and they can then choose to spend them however they would like.

The points closely align to retail prices, so people are making the same decisions as they would at any other supermarket. Giving people the opportunity to make their own decisions and choose what they want to buy, gives them their dignity and empowers them to make their own decisions.



There is also a financial expectation that users will contribute to the cost of the groceries which helps fund further food purchases for the social supermarket.

Rik advised that after nearly a month operating, the social supermarket, Koha Kai Whare, has had over 500 people coming through the doors and said, that the real need in the community is being met with this new service.

If you would like more information about how you can support the Palmerston North Methodist Social Services, you can go to <https://www.pnmss.nz/> donate or contact me.

Carol Barron, National Coordinator

03 375 0512 | 027 561 9164 | Carol@MethodistAlliance.org.nz





Why should I vote?

Carol Barron

An election is coming up in a matter of weeks, you probably know this already, but some people don't know, or don't care, or are overwhelmed about who to vote for, and I understand that.

The value of living in a democracy is that we have the right to vote to determine who will govern our country. And here are three reasons why voting is important:

1. It gives you a say on important issues that are important to you – this could be education, income security, recycling, climate change, housing, employment etc.
2. Your vote gives you the power to choose to vote for your local and national representatives. If you don't vote, other people get to decide who represents you.
3. If you don't register in time, you may not be able to vote – it is as simple as that. And enrolling to vote is easy – just click on this [link](#) to find out how.

Once you have enrolled to vote, then you need to decide what is important to you, so you can make an informed decision.

You have two votes – one for your local Member of Parliament, and a party vote which determines the number of seats each party has in Parliament.

To find out which party is closely aligned to the issues you are concerned about you can do a quick survey [here](#). The survey asks a few questions and then gives you a result about where you fit in the political landscape and how much you agree with each party. It is quite fascinating – so I encourage you to give it a go.

You can also check out the RNZ guide to party policy which is a great summary and has done all the hard work for you. Read more [here](#).

NZCCSS has created some tables that give a quick understanding of what policies exist for the parties currently in Parliament – check these tables out [here](#). On the NZCCSS website there are also some election blogs you may like to read [here](#).

If you were wondering how the current Government has performed against its manifesto, you can read the NZCCSS manifesto tracker [here](#).

Despite what the polls and pundits say, it is likely that this election is going to be very close, so your vote does count. It is important that everyone votes, and you may like to join with ActionStation to triple the vote. All you need to do is have a conversation with three friends and ask them to vote. Then follow it up once ballot boxes open. Choose three people who care about people and our planet, and are unlikely to vote or undecided on who to vote for. Read more about that [here](#).

I know many of you are already well informed and enrolled to vote and are organising meetings with your electoral candidates so you can question them on where they stand on issues important to you. If you are looking for starter questions, you could choose some from the Methodist Alliance resource for Parishes on Income Security, Debt to Government, and Wealth Distribution, which can be found [here](#).

You can find more questions from the Inter Church Bioethics Council (ICBC) [here](#).

Make your vote count in the 2023 Election, and you can support others to make their vote count too.

Carol Barron, National Coordinator

03 375 0512 | 027 561 9164 | Carol@MethodistAlliance.org.nz





My people will live in peaceful dwelling places, in secure homes, in undisturbed places of rest. Isaiah 32:18

Julie Roberts

Sustaining Tenancies provides support to individuals and whānau who need help to sustain their tenancy and address any issues which put their tenancy at risk.

The Methodist Mission Southern provides this service in Otago and Southland and this is a government project to reduce these occurrences in our community - 'homelessness is prevented where possible, or is rare, brief and nonrecurring'.

Tenancy can sometimes be a very confusing and difficult concept to understand. With support one of our clients has resolved a distressing incident with a landlord. There was some confusion relating to who was included in the client lease. Our client wanted their partner on the lease agreement but was unable to make their wishes understood by the property manager. With much deliberation, mentoring, and advocacy the problem has been solved. Our client was then able to work with the property manager themselves to resolve some maintenance issues that needed to be attended to.

The Mission's two Sustaining Tenancies Specialists / Taituāra a Hāpori Megan and Tammylee carry a caseload of sixty clients per year and are constantly balancing enquiries about the service. Questions have been asked even at midnight through Facebook Messenger for help with unresolved tenancy issues.

Megan and Tammylee act as advocates for clients when communication has broken down or become dysfunctional, which occurs for various reasons. They work with the homeowners to find a satisfactory outcome that benefits both parties. Their intervention results in creating better living conditions and problem-solving rent arrears going some way to fulfilling our vision of a safe, caring, and sustainable society where every citizen is valued and respected. It is not a level playing field when English is a second language, poverty reduces your choices or there is a lack of understanding of cultural norms that influences how you communicate with landlords to feel safe in the home you occupy. We are committed to helping create equal opportunities to lead a fulfilled life.

Megan reports "We have managed clients with hoarding issues, healthy home contraventions, rent arrears, tribunal tenancies disputes, to general maintenance."

Maintenance support is a significant area where help is needed. One client had worked hard for some time to get their property tidied up and acceptable to the landlord. Unfortunately, whilst mowing their lawns, a large stone flicked up onto one of the lounge room windows, causing considerable damage. With three young children, and already struggling to manage a tight budget they were unable to afford to get the window fixed. With our support, quotes were obtained for the window replacement, and it has now been scheduled for repair. The family expressed heartfelt gratitude for this amazing service."

"The work has been rewarding by empowering people to have confidence when dealing with property managers and owners." Megan states, however, "It has been evident that if referrals come earlier problems can be averted and avoid escalation."

Clearly seen in various passages of the Bible, the concept of "home" carries both a physical and spiritual significance. To ensure the enduring nature of a home, rather than a house as an asset (as it is for some landlords), surely it should be a precedence that the tenants feel safe, secure, and healthy; "a peaceful dwelling place."





A recent Sustaining Tenancies client faced health issues, including a back problem requiring surgery. Although their yard was small, they struggled to maintain it due to physical challenges and a tight budget. Fortunately, with the assistance of the Sustaining Tenancies service, they were provided with an electric lawn mower, easing the strain on their back with its push-button start. The client expressed deep gratitude, for the independence and accomplishment as they can now easily maintain their lawns.

The Mission's Sustaining Tenancies, in its third year, has proved to be successful and busy work, providing support for at-risk tenants. During this time support has been provided to people who are struggling to hold onto the lease for their home. A raft of obstacles such as mental health issues, adverse life events (e.g., breakups, job losses, family violence), conflicts with landlords, alcohol or drug use, and uncertainties following release from prison. Help with rising power costs, support for individuals facing homelessness due to fires, aid in securing rental bonds, financial assistance for managing changes in family finances after a partner leaves, and guidance during sudden rent increases.

Our Taituāra a Hāpori note "We know that the more children are moved from house (and school) during their early years, the harder it is for them to find their feet in later life. And we know that there are many other hidden costs in moving that often-set finances back a good couple of years". This is backed up by research from the world-famous Dunedin Study, showing negative life-course effects from repeated home and school dislocation.

To 'undo' this creation of generational poverty the Mission is proud of our Sustaining Tenancy services, where "Wisdom and understanding are needed to build and establish a house."
Proverbs 24:3-4

Did you know you can read our Kōrero Kete directly in your inbox through our monthly newsletters? You can sign up on our website/Facebook or contact Julie julier@mmsouth.org.nz

