



INTRODUCTION TO CONFERENCE

Methodist Conference 2022

Kerikeri, Northland

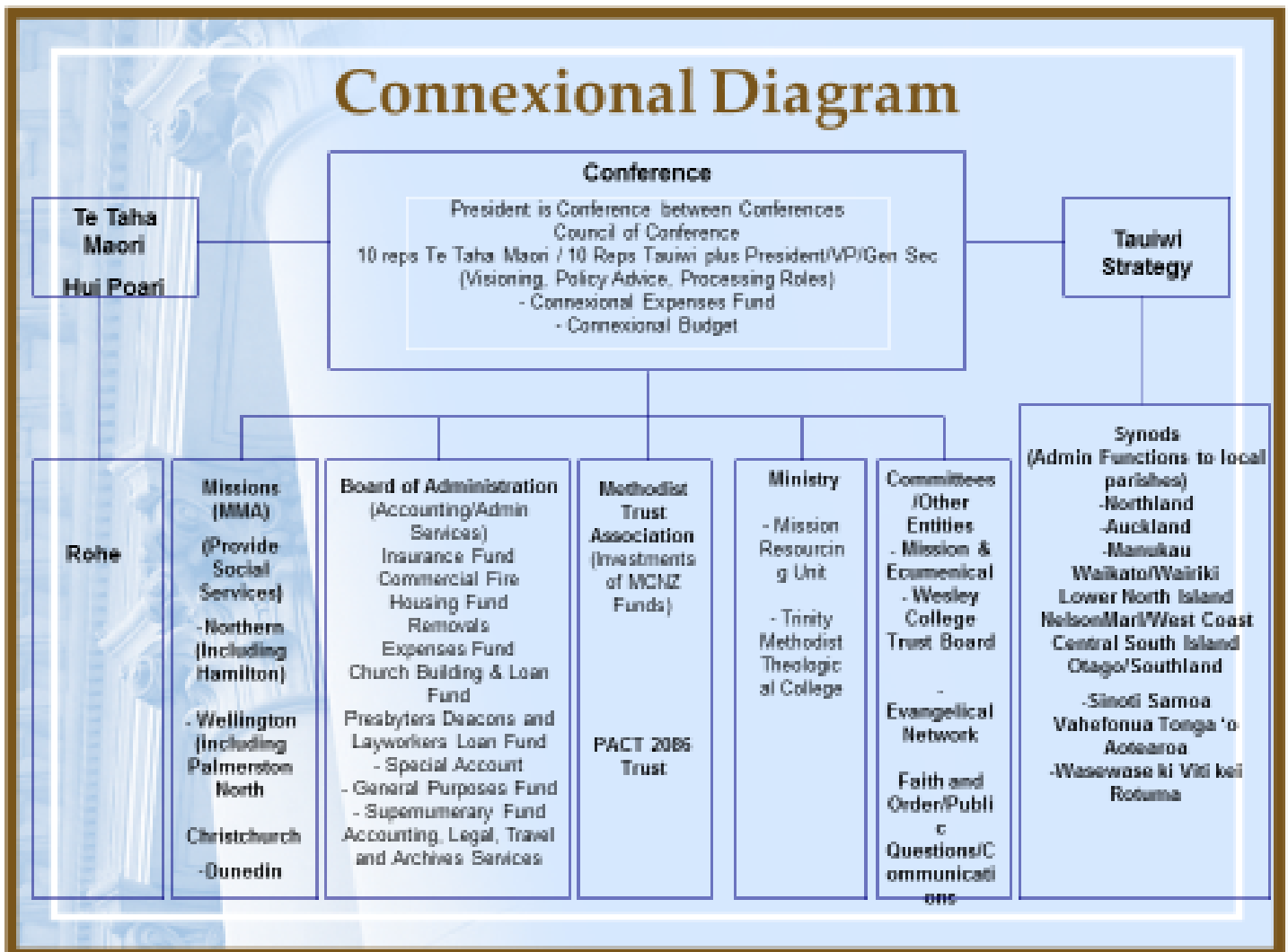
Te Hāhi Weteriana o Aotearoa

THE ANNUAL METHODIST CONFERENCE

There are three levels of organisational life in with Methodism:

	Tauiwi	Te Taha Māori
Locally	Parish	Rohe
Regionally	Synod	Hui Pōari
Nationally	Annual Conference	Hui Toopu

Below you will see a diagram which sets out the structure of the Church as it relates to the Conference.



Every ordained Methodist Presbyter and Deacon is entitled to attend the Conference, and each Parish is entitled to send one lay representative to Conference for every Minister appointed to the Parish. The parity of lay

and clergy representation is very important in the ethos of Methodism and was a principle established by John Wesley himself.

The Conference is about being Methodist at a national level, in the way we live in society and the way we do our mission by:

- Affirming what has been done in the past year
- Hearing how things are at the moment
- Setting the agenda and priorities for the year ahead

It is not a place where local congregations seek solutions to their problems – this is the role of Synod and Synod Superintendents.

The Annual Conference has two distinct phases:

PHASE ONE: INSPIRATIONAL

This Year Conference is being held at The Turner Centre, Kerikeri, Northland.

Conference begins on Saturday with a Powhiri at 10am which will be followed by a service to honour those who have died since Conference 2021. This will be followed by lunch for all in attendance. At 2.00pm is the Induction service for the incoming Presidential Team followed at 4.00pm by a welcome to the official visitors, tributes to ministers who are retiring from active service and those who have held Connexional appointments. Conference members then have a free evening to relax or join with the local community at the Kerikeri Street Party in the CBD, which follows the Northland Waste Kerikeri Half Marathon.

On Sunday morning services will be held in Methodist and Union Churches around Northland. Information on these services will be provided prior to the day.

The Affirmation of Ministry Service and Reception into Full Connexion will commence at 2:30pm on Sunday 20 November 2022 at the Turner Centre (Auditorium). The service will conclude at 3:30pm.

This Conference we will not be holding an Ordination Service as there are no candidates. However, we do not want simply to omit that service but will be using that opportunity to reaffirm the promises made by presbyters

and deacons in Ordination Services in years gone by. We will also take the opportunity to celebrate the ministry of all lay people active in Te Hāhi Weteriana o Aotearoa.

This year at 4:00pm Trinity College Graduations will take place in the Turner Centre (Auditorium).

PHASE TWO: THE BUSINESS SESSIONS

Note: It is vitally important that every Conference member has read:

- a) The reports contained in the agenda before Conference commences.
 - b) The Consensus Decision Making process found in the agenda on pages 11-18.
- Conference opens on Monday, Tuesday and Wednesday at 8.30am with notices, singing and worship
 - 9:00am on Monday is the commencement of Conference business with Introductions, Consensus Decision Making and Questions 1-24, receiving enbloc decisions and a reminder of Conference processes.

As part of its commitment to Bi-Culturalism and power-sharing, Conference has adopted some principles for making decisions. Refer to agenda page 11 for a full explanation of the process.

Where there is agreement by both caucuses Conference can make a decision. Conference can only make a decision if both partners agree.

Who is able to take part in Conference?

Any person who is a full member of the Conference may speak. If you wish to speak you would normally raise your hand to indicate you wish to do so and then you would move to the nearest microphone. If there are a number of people wishing to speak they often sit in order near the microphone and await their turn.

When you stand to speak you would first acknowledge the President or Vice-President – whichever one is in the chair by saying:

“President Peter or Vice-President TeRito, members of Conference”, then immediately follow with your name and who you represent e.g. “Mark Jones, Christchurch Central Parish”.

State your point of debate clearly and succinctly. Do not repeat the arguments of previous speakers. You may also move to a microphone to ask for clarification if something is not clear.

Who are the key people involved?

The Presidential Team

President:	Rev Peter Taylor
Vice President:	TeRito Peyroux-Semu
Ex President:	Rev Andrew Doubleday
Ex Vice President:	‘Etuini (Edwin) Talakai

Names of President and Vice President Elect to take office in 2024 will be announced during the Conference business days.

Process used for selection of President/Vice-President Elect to take office in 2024:

(Excerpt from the Law Book ‘Section 7: The Conference’)

5. 1.7 The nominations for both offices (*at Conference*) shall be in accordance with the following procedures:
- (d) Tauwi and Te Taha Maori will each select its preferred candidates for the offices of both President and Vice-President according to their own procedures.
 - (e) There shall be a Conference Panel, (the Panel), representing the Partnership.
 - (f) Hui Poari and Tauwi Strategy Committee each nominate five members for the Conference panel from the membership of their respective Council of Conference members.
 - (g) The Panel is not the Council of Conference (Council membership is a convenient way of selecting Connexionally experienced people)
 - (h) The first task of the panel is to choose two Convenors, one from each of the groups of five.

Then:

- (n) Having come to a consensus, the Convenors report to the General Secretary that the appropriate process has been followed, and name the President and Vice President for the next year.
- (o) At an appropriate time the General Secretary reports to the President that this is the decision of the panel.
- (p) The names of the President and Vice-President Elect are then announced by the President as duly appointed.

Elders

The Council of Elders enable and assist the Church in its Bi-cultural Journey by seeking to model the equal partnership prefigured in the Treaty of Waitangi, and specifically it may:

- (a) monitor recommendations of all Conference Committees and Boards of the Conference;
- (b) reflect and comment on the style, work and priorities of all Conference Committees and Boards;
- (c) refer back for further consideration any report or recommendation which the Council of Elders considers will hinder or divert the Church from its Bi-cultural Journey;
- (d) report each year to the Conference.

The Council of Elders is appointed each year at Conference and consists of two people nominated by Te Taha Māori and two people nominated by Tauwiwi Strategy and affirmed by the Tauwiwi meeting.

The current Elders are: Roslyn Wilkie and Hoana Flay for Te Taha Māori and Viv Whimster and Temisi Taufa for Tauwiwi.

Conference Staff

General Secretary	:	Rev Tara Tautari
Office Staff	:	Lucille Havenga
	:	Peter van Hout
	:	Stephen Walker
		Wendy Anderson
		Trudy Downes
		Jane Pinney
		Ady Shannon
		Wendy Keir (<i>working from Christchurch</i>)

Daily Record	:	Jan Tasker TBA
Journal Secretary	:	Pauline McKay Barbara Peddie
Business Sheet Updates	:	Ramai Tautari
Legal Adviser	:	Ruby Manukia-Schaumkel
Chaplains	:	Keita Hotere Tovia Aumua

BI-CULTURAL PARTNERSHIP LEADERS

Commissioner Te Taha Māori	Te Kani Williams
Directors Mission Resourcing:	Rev's Setaita Veikune & Siosifa Pole

How to read your Agenda

• 'Day to Day' schedule	pp 2
• List of groups reporting to Conference	p 4
• How Conference Works	pp6
• Members of Conference	pp14
• Reports from Connexional Committees/Boards	
A: Council of Conference	A
B: (i) Te Taha Maori	B(i)
B: (ii) Tauivi	B(ii)
C: Law Revision	C
D: Administration	D
E: Ministry	E
F: Faith and Order	F
G: Social Services	G
H: Mission and Ecumenical	H
I: Communications & Organisations	I
J: Social Issues	J
Nominations for President & Vice-President	K
Tributes to the Deceased	L
Record of Service for Retirees	M
Statistics	N
Index	

CONFERENCE QUESTIONS

Conference operates by answering 42 questions and is not complete until all questions are answered. The business of Conference 2022 will be conducted under the following questions:

LAWS AND REGULATIONS SECTION 7

11. 2: The official work of the Conference, comprised under the Questions constituting the ordinary routine of business, shall be introduced by the Secretary.

The Questions are:

11.1 The business of the Conference shall be conducted under the following questions and under such further questions as the Conference may from time to time prescribe, the answers to such questions shall be recorded in the Minutes of Conference.

(a) Any policy matter in a report to Conference is to be accompanied by a corresponding decision.

11.2 The official work of the Conference, comprised under the Questions constituting the ordinary routine of business, shall be introduced by the Secretary.

The Questions are:

1. Who are members of this Conference?

(a) those in Full Connexion.

(b) representatives

2. What Members from other Conferences and Churches are associated with this Conference?

3. What Candidates are now received for training?

(a) Deacon

(b) Presbyter

(c) Minita-a-iwi

4. Who are to continue in training for ordained ministry?
 - (a) Deacon
 - (b) Presbyter
 - (c) Minita-a-iwi

5. Who are to be stationed by Conference as Probationers?
 - (a) Deacon
 - (b) Presbyter
 - (c) Minita-a-iwi

6. Who are now admitted as Presbyter or Deacon in Full Connexion with the Conference?
 - (a) those who have completed their probation
 - (b) from another Church

7. Who are now ordained Deacon or Presbyter?
 - (a) Deacon
 - (b) Presbyter

8. What Minita-a-iwi:
 - (a) are received as candidates
 - (b) have completed their training

9.
 - (a) What Deacon is reinstated into Full Connexion?
 - (b) What Presbyter is reinstated into Full Connexion?

10.
 - (a) What Deacon now ceases to be recognised as in Full Connexion with the Conference?
 - (b) What Presbyter now ceases to be recognised as in Full Connexion with the Conference?
 - (c) What Presbyter now ceases to be recognised as a Probationer with the Conference?
 - (d) What Deacon now ceases to be recognised as a Probationer with the Conference?
 - (e) What students are discontinued in their training?

11. What appointments are authorised to provide remuneration at a rate less than Standard Stipend?
 - A. For full-time or part-time Local Ministries (with no remuneration) with Ministry Covenant (full or part-time):
 - (a) Deacon
 - (b) Presbyter
 - B. For part-time Ministries (remuneration pro rata) with a Ministry Covenant:
 - (a) Deacon
 - (b) Presbyter

12. What Deacon or Presbyter is transferred to, or is now exercising ministry in, another Conference or Church, whether overseas or in New Zealand, and has the right to return to the Conference on the completion of service with that Conference or Church?
 - (a) Deacon
 - (b) Presbyters

13. What Deacon or Presbyter has been received from another Conference or Church?
 - (a) Deacon
 - (b) Presbyter

14. What are the decisions of Conference on Disciplinary matters?
 - (a) Which are required to be reported to the Conference?
 - (b) Which have been processed during the preceding year, under the Disciplinary Code?

15. For what Deacon or Presbyter is no appointment available?
 - (a) Deacon
 - (b) Presbyter

16. What Deacon or Presbyter are not available for Stationing this year?

(all ministries recorded under this question shall have prepared

a Ministry Covenant)

- (a) Deacon
- (b) Presbyter
 - 1) Chaplaincies
 - 2) Other

- 17. What Deacon or Presbyter retire at this Conference?
 - (a) Deacon
 - (b) Presbyter
- 18. What Deacon and Presbyter continue in retirement?
 - (a) Deacon
 - (b) Presbyter
- 19. What Deacon, Minita-a-Iwi and Presbyter have died since last Conference?
 - (a) Deacon
 - (b) Minita-a-Iwi
 - (c) Presbyters
- 20. What Laypersons who have given leadership in the Conference have died since last Conference?
 - (a) Te Taha Maori
 - (b) Tauwiwi
- 21. (a) Are there any congregations where, for imperative pastoral considerations, others than Presbyters should have authority to administer the Sacraments?
 - (b) Who are now given special authority to administer the Sacraments?
- 22. (a) Does the Conference sanction the amalgamation or division of any Synod or Parish?
 - (b) What other Agreements affecting Parishes and/or Use of Buildings are approved by Conference?

23. (a) To what Parishes/Rohe are additional Deacons, Minita-a-Iwi or Presbyters appointed?
(b) From what Parishes/Rohe are Deacons, Minita-a-Iwi or Presbyters withdrawn?
24. How are the Presbyters, Deacons, and Minita-a-Iwi stationed for the ensuing year?
25. What are the decisions of Conference on matters relating to the Council of Conference?
 - (a) What is God saying to us now?
 - (b) What more can be done to promote the work of God?
 - (c) Connexional Budget
 - (d) PAC Distribution Group
26. (i) What are the decisions of Conference on matters relating to the tangata whenua, Te Taha Maori?
 - (a) Te Taha Maori Property Trust
 - (b) Wellington Charitable and Educational Endowments Trust
26. (ii) What are the decisions of Conference on matters relating to Tauwiwi?
 - (a) Tauwiwi Strategy
 - (b) Evangelical Network
 - (c) New Zealand Methodist Women's Fellowship
27. What are the decisions of Conference on matters relating to Law Revision?
 - (a) New or amended laws to be brought to Conference
 - (b) Presidential Rulings which have been made during the year
28. What are the decisions of Conference on matters relating to the Administration Division?
 - (a) Investment Advisory Board
 - (b) Methodist Trust Association
 - (c) Connexional Trusts
 - (d) PACT 2086 Trust

- (e) Robert Gibson Trust
 - (f) Statistics
 - (g) Wesley Historical Society
 - (h) Professional Development Grants Committee
29. What are the decisions of Conference on matters relating to Ministry Trinity College?
- (a) Wesley College
30. What are the decisions of Conference on matters relating to Mission Resourcing?
- (a) Churches Education Commission
 - (b) Diaconate Task Group
 - (c) Lay Preachers
 - (d) Taiwi Youth
 - (e) Uniting Congregations of Aotearoa NZ
 - (f) Chaplaincies
 - (i) Tertiary
 - (ii) Hospital
 - (iii) Defence Force
 - (iv) Prison
31. What are the decisions of Conference on matters relating to Faith and Order?
32. What are the decisions of Conference on matters relating to Methodist Social services?

The Methodist Alliance

- (a) Its life and work
- (b) Services provided by members
- (c) Collation of Conference report from members for approval by Conference
- (d) Recommendations regarding membership of boards, NZCCSS Methodist members, social justice and social advocacy.

33. What are the decisions of Conference on matters relating to Mission and Ecumenical affairs?
 - (a) Mission and Ecumenical Committee
 - (b) Christian World Service
 - (c) World Methodist Council

34. What are the decisions of Conference on matters relating to Communications and Organisations?
 - (a) Methodist Publishing
 - (b) Media and Communications Fund

35. What are the decisions of Conference on matters relating to Social Issues?
 - (a) Public Issues Network
 - (b) Inter-Church Bio-ethics Council

36. (a) Who is elected President of the Church for induction at the next Conference?
 - (b) What arrangements are made for the President's supply?

37. (a) Who is elected Vice-President for induction at the next Conference?
 - (b) What arrangements are made for the Vice President's supply?

38. Who is elected the President's Legal Adviser?

39. Who are elected to the following Synod and Regional positions for the ensuing year?
 - (a) Superintendents
 - (b) Secretaries
 - (c) Financial Secretaries
 - (d) Property Secretaries

40. Who are appointed as members of the following Standing Committees and their Conveners?
 - (a) Pastoral Committee
 - (b) President's Committee of Advice
 - (c) Council of Elders
 - (d) Budget Task Group

41. When and where shall the next Conference be held?

42. When shall the Annual Synod and other Synod Meetings be held?

How to get the most out of Conference for yourself

- Each day set yourself a goal of achieving 3 things you would not normally do
- Eat with different people/cultures
- If you don't understand things – ask someone! Knowledge is power!
- Volunteer for a task you never tried before.
- Be prepared to give a clear and well presented report to your congregation on Sunday 27 November, 2022.

