



Gatherings at Alert Level 1

Ruby Manukia-Schaumkel

Currently there are no restrictions on gatherings at Alert Level 1. All public and private events and gatherings, church, sports and cultural activities can go ahead. For events held indoors or outdoors, there are no limits on numbers or any physical distancing requirements.

However, we must continue to be vigilant as Covid-19 is still uncontrolled overseas and people entering our borders are potentially at high risk of introducing the virus.

Organisers of gatherings are encouraged



Ruby Manukia-Schaumkel

to help people record where they've been and provide the ability for attendees to practice good hygiene. Event organisers should display and use QR codes to assist with contact tracing.

The church has a QR code available from the Connexion Office. It is good practice for all churches to keep a record of attendees at services and other gatherings to support any future tracing if required.

If you have a business or other entity, including venues that host gatherings, you can help prevent the future spread of the Covid virus by displaying a QR code. This will help people using apps to keep

track of where they've been.

Our work with the MoH Tracer App team has helped create a very easy QR Code Poster creation process. All of our non-residential buildings should be displaying QR Code posters.
www.qrform.tracing.covid19.govt.nz

Practice good hygiene:

All those attending an event or gathering should have access to appropriate hand washing facilities with soap and water, and the ability to dry their hands thoroughly. Provide an alcohol-based hand sanitiser.

Cough and sneeze into your elbow and use hand sanitiser regularly.

Keep communal areas such as bathrooms and high-touch surfaces like door handles and payment machines clean. Provide and use an appropriate cleaning solution or spray.

To help prevent further spread of Covid-19 and other viruses (e.g., the common cold or influenza), physical distancing is recommended where possible. While the risk of community exposure to Covid-19 is low, it may re-emerge. Following basic

hygiene practices helps to prevent spreading any virus.

Attending church or a gathering:

Stay home and avoid attending church or a gathering of any size if you are:

- unwell
- a confirmed or probable case of Covid-19
- waiting for a Covid-19 test result
- self-isolating.

Health care workers should be extra vigilant with hygiene practices at social gatherings to avoid infection.

Managing risk:

If Covid-19 re-emerges and spreads in New Zealand like we have seen at the border isolation process, restrictions on gatherings are likely to be re-introduced. It is vital to remain vigilant and exercise good judgement.

Our latest Covid advice documents are available on our website. Visit www.methodist.org.nz/caring_for_our_people/coronavirus_2019_-_advice

Look after yourself and one another.

P U B L I C I S S U E S

Measuring Climate Care in Methodist Parishes

Golden rules for climate action - engage, plan, act and measure!!

Rev Dr Betsan Martin, Public Issues Coordinator

In November 2018, the MCNZ Conference passed a resolution creating the Climate Justice Working Group. Tasks include gathering information on care in our use of water, energy, waste and food. In this we highlight care for sacred earth.

To do this we need to establish a baseline of current practices, with measures, so that we can map changes over time. We are designing a survey to be filled in by parish secretaries, parish council members and presbyters.

The survey is the most recent of 18 months' work on climate justice. We have included scientific, theological and educational aspects with resources and calendars, and a workshop on emissions reduction for the church as an organisation.

This survey is designed to capture information from the various parish bases. There can be other methods to collect information from other parts of

the church, better suited to their mode of operations.

Covid-19 brings to light the close relationship between human and environmental health. The bridge between these lies in our use of energy and in reducing waste and pollution.

Come Down and Talk about Recovery

Covid-19 is showing remarkable responses of care and redistribution, entirely in the spirit of Zacchaeus (Luke 19). As we watch from our trees of isolation we can see that church communities and social services are at the forefront of responses.

are making sure that whanau and kaumatua have food and medical supplies, and proper protection from the restriction rules. Food banks and civil defence are responding to an explosion of need for food parcels.

The big question for recovery is can we put in place policies of redistribution? Until now, the answer from neo-liberal thinking is that you can only solve poverty and need with growth. A bigger pie allows everyone. We never take the path of redistribution through tax and policy for income sufficiency. It is time for the Zacchaeus spirit to guide our sharing



The Climate Justice Working group includes (rear, left to right) Marion Hines, Elisapesi Havea, Prince Devanandan, Joeli Ducivaki and Peter Lane. Front, Nicola Grundy, Betsan Martin, Soana Muimuiheata, and Mataiva Robertson, (Absent George Zachariah, Michael Lemanu and Siosifa Pole).

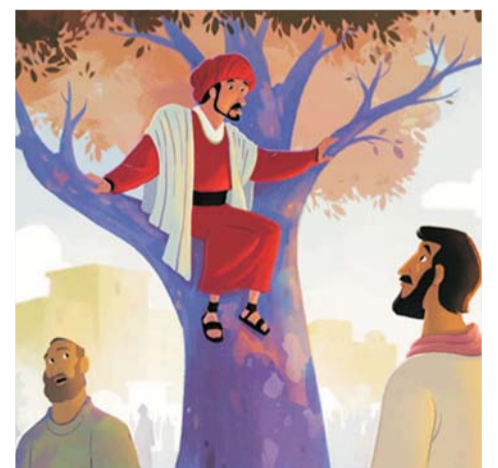
of wealth.

Dr Niki Harré, Professor of Psychology in the Faculty of Science, University of Auckland, makes a fine case for building on the generous sharing we have seen during the emergency. She writes, "The real test is whether, as we move from emergency to recovery, we are prepared to share instead of just helping each other."

We updated our letter to the Prime Minister to urge for a courageous recovery with redistribution and a climate change lens.

We are concerned that 'shovel ready' projects will sidestep the opportunity to reorient us away from pollution-intensive development. There is a strong call from civil society for criteria for funding projects which expand work on regenerative activities.

We want to see reduced carbon emissions, air pollution and waste with criteria which include iwi/Māori led investment and projects, regenerative



agriculture, and food security - based on sufficient incomes, not dependence on food rescue and food banks. Matanikolo has already shown the way for Pacific community housing initiatives. And let us be sure of keeping the agenda for clean waterways.

We ask parishes to bring these concerns to the prayers of the church.

METHODIST ALLIANCE
NGA PURAPURA WETERIANA

If your parish is engaged in community or social service work, you should join the Methodist Alliance.

The Alliance supports the work of its members by leveraging collective skills and experience, providing resources and information, and raising the profile of the work you do.

If you would like to join the Alliance please contact the National Coordinator Carol Barron:

03 375 0512 • 027 561 9164

Carol@MethodistAlliance.org.nz

PO Box 5416, Papanui, Christchurch 8542

methodist.org.nz/methodist_alliance