

A CENTURY OF WITNESS



Wesley Church, Pukekohe, opened 1959.

Circulated by arrangement with the Pukekohe Methodist Circuit,
by the Wesley Historical Society (New Zealand) as Vol. 18,
Nos. 1 and 2 of its proceedings, 1960.

AUTHOR'S NOTE

Compiling the history of the first 100 years of Methodism in Pukekohe has been an interesting task. A complete record of the minutes of the Quarterly Meetings has made my task much easier. I wish to acknowledge the assistance given to me by the following people: the Revs. E. W. Hames, W. L. Divers, C. T. J. Luxton, E. M. Marshall, L. R. M. Gilmore and Mr F. H. Barnard. Use has been made of the early records made available by the Onehunga Circuit, and extracts from the Silver Jubilee Publication of the Franklin Times. Thanks are also due to all who have assisted with information and photographs. This is a history of 100 years of faithful witness, and we

A Century of Witness by E. L. Curnow Jnr.

can be assured that the God who guided His people through many experiences in the last century, will lead us on to even greater things in the future, and "the best of all is. God is with us".

E.L.C., Jnr.

FOREWORD



Rev. W. L. Divers

It was Emerson who said: "There is properly no history only biography."

This brief history of the Pukekohe Methodist Circuit has behind it the biographies of many humble believers who knew the noble duty of faithfulness to their Master and their Church

In the new Wesley Church at Pukekohe is a plaque, erected by the Trustees, to commemorate 'A century of faithful Methodist witness. Over the years, our people have reiterated the claim of the early apostles, "We cannot but speak the things which we have seen and heard."

At the celebrations in connection with the opening of Pukekohe Church in 1959, the Rev. C. T. I. Luxton and Mr Le Min Curnow gave an interesting survey of the hundred years since Methodist services were first commenced in the town. As no previous history of the Circuit had been written, it was the obvious thing to request that the material be published. Mr L. Min Curnow assisted by Mrs Curnow, gladly agreed to undertake this task. The result is a lively and valuable piece of work for which the Circuit is very grateful.

As I write this foreword, and we face our second century of Methodism in Pukekohe, the work is both consolidating and extending. Our people are possessed with a steady enthusiasm for the work of God and they join with Methodism's founder John Wesley, in saying: "God buries his workmen but carries on his work. *W. LLOYD DIVERS.*

A Survey

THOSE EARLY YEARS

Early history reveals that to the Rev. James Buller fell the honour of unfurling the Methodist Banner in what is now known as the City of Auckland. Rev. J. Buller first journeyed from Tangiteroria near Whangarei along native tracks for 200 miles to the small settlement of Auckland in 1841. Contacts were made and following a second visit in 1842, an establishment of societies of 15 European and 150 Natives was reported to the district synod, and in due course Auckland's first Methodist Church in High Street was opened on July 2nd, 1843.

The following years tell a wonderful story of progress in the establishment of churches in and around the Capital, and due to intensive Maori work associated with the Auckland Circuit, it was decided to constitute the Manukau Circuit. The following preaching places were mentioned in the first minute book of the Manukau Circuit: Papakura 1854, Mangatawhiri 1858, Karaka 1858, Pukekohe East 1859, Waiuku 1860, Rama Rama 1861, Mauku 1865.

METHODISM IN FRANKLIN

The beginnings of Methodism in Franklin were among those early settlers who, prior to the disastrous Waikato war, had begun to make homes for themselves in the Waiuku, Pukekohe and Karaka districts. With the advent of more peaceful times after 1863, and the re-populating of these areas, the Rev. W. M. Morley was stationed at Waiuku as second minister to the Manukau Circuit, holding services also, chiefly at Pukekohe and the Waikato Heads. Very soon the first church in the district was erected at Waiuku in 1865 during the ministry of the Rev. J. S. Rishworth.

ERA OF CHURCH BUILDING

Franklin Circuit (Pukekohe—Waiuku) was constituted and services were begun also at Mauku, Linwood and Drury. With the appointment of the Rev. S. J. Garlick in 1877, the residence of the minister was shifted from Waiuku to Pukekohe as being more central for the effective working of the circuit.

A remarkable era of church building then followed. In July, 1877, a church was opened at Tuakau, followed by Pokeno in May, 1878, and by Pukekohe in June of the same year. Mauku, Bombay and Paparata followed in due course, no less than six churches thus being erected within nine years—an achievement of which to be justly proud. Changing conditions necessitated speedy enlargements and removals. At Mauku a large transept was added; at Tuakau, what was practically a new building was erected on a new site on the Harrisville Road above the station; a new church was erected at Waiuku on a more suitable site within the township; the church at Pokeno

was shifted from the hill to the flat subsequently being moved to Karaka. In Pukekohe itself, five acres of land had been acquired as a parsonage site, now right in the centre of the town, upon which a house was erected in 1883. To this site the church was moved in 1891 and enlarged. Until 1900 this far-flung circuit was the care of only one minister, assisted by a devoted band of local preachers. In that year a Home Missionary was stationed at Waiuku and a third agent was placed at Tuakau in 1913. It is interesting to note that there were then 20 preaching places on the plan: Pukekohe, Waiuku, Otaua, Bald Hill, Buckland, Oncwhereo, Kariotahi, Pukekohe East, Pukekawa, Pakington, Kohekohe, Mauku, Tuakau, Pokeno, Bombay, Paparata, Linwood, Ararimu, Karaka and Puni.

DIVISIONS OF THE CIRCUIT

With the continual growth of the district, and for the purpose of more effective work, it was found necessary for the Frank-lin Circuit to be divided. The division was made by Conference in 1915, when the Waiuku and Pukekohe-Bombay Circuits were constituted.

During the next 20 years the work flourished in the Pukekohe-Bombay area and in 1935 it became necessary for a further division. Thus came about the Pukekohe Circuit and the Bombay-Tuakau Circuit, the Pukekohe minister being Superintendent Minister of both Circuits until the beginning of 1960 when Bombay-Tuakau had its first ordained minister.



FIRST MINISTER OF PUKEKOHE: The Rev. S. J. Garlick.

The Churches Within The Circuit

PUKEKOHE



THE CHURCH BUILDING

The first church was built in 1878 and moved to its present site in 1891. Many of the older people can recall the Pukekohe Church as it was in those early days. In keeping with the design of most churches at that time, the pulpit was in the centre of the sanctuary area above which a text was usually painted. "Believe On The Lord Jesus Christ And Thou Shalt Be Saved" was the text in the Pukekohe Church. The increase in population necessitated additions being made to the building in the years that followed. Records show that in 1918 a vestry was added to the church and in 1930 the Bible Class room had to be enlarged. Later alterations were made inside the building, the text was removed, and the pulpit placed at the side.

THE PEOPLE

The church is not just a dedicated building. When we speak of the church, we visualise a building with a group of people who have as their leader a minister. Building, minister, and people are the church and represent a Living Christ in the community. In the early days the people gave expression to their faith more readily than we do today. It was not an uncommon thing to hear an "Amen" coming from somewhere in the congregation during a prayer or the sermon.

Throughout the years we read of Evangelistic Missions being held, and the desire for prayer on the part of the people. May we mention two memorable missions. One in 1931, when the Methodist, Presbyterian and Salvation Army Churches arranged an evangelistic mission which took place in the Masonic Hall, and was conducted by Revs. Lionel Fletcher, Joseph Kemp, and Mr W. J. Mains. Then in 1959, when arrangements were made to convey our people by bus to the Billy Graham Mission held in Carlaw Park, Auckland. These missions, and many other smaller ones held in the church, have been of great inspirational value to the circuit. Various organisations have come into being during the years, through which people have been able to serve the Master, and help to extend the Kingdom of God. The weekly fellowship and prayer meeting remains the backbone of the spiritual life in the church. Many are the faithful Christians who have passed through the doors of the Pukekohe Church, and we thank God for their witness, and in this our own day, we inherit the fruits of their labour.

LAND SOLD

In 1941 the need for homes was great, and the State Advances Corporation approached the trustees re the purchase of some of the land. The land was sold for £1,400 and a provision was made that the new road in the subdivision be called Wesley Street.

THE PARSONAGE

The parsonage was built in 1883, and in 1900 a further two rooms were added, for the cost of £37/10/0. In 1927, the parsonage was moved across Wesley Street to its present site. Since then additions and renovations have been made.

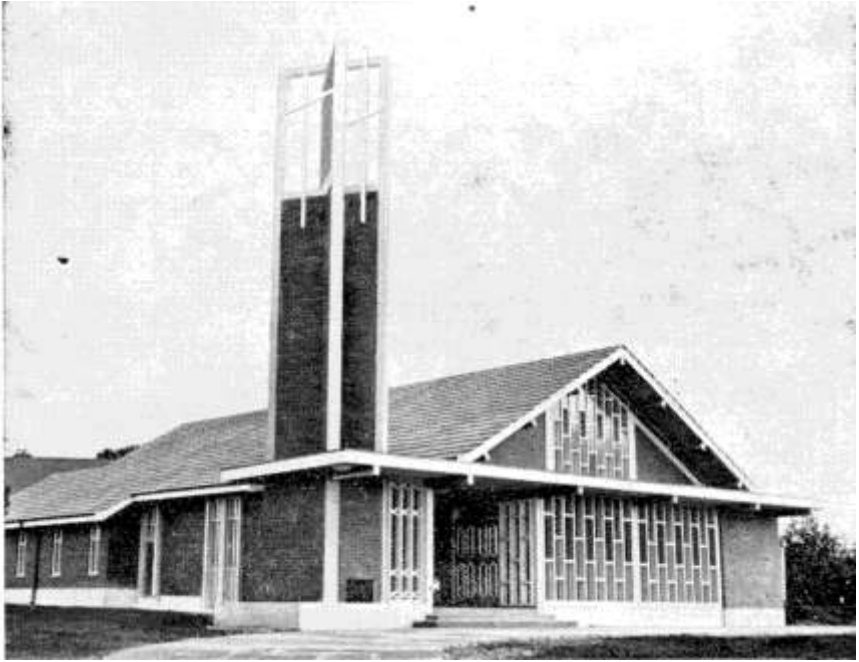
THE NEW CHURCH PROJECT

For some time it was felt that a new church building was needed in Pukekohe. A special meeting of the congregation and members to consider a new church, was held in Pukekohe in September, 1955, and the Chairman of the Auckland District, Rev. F. W. Hames, M.A., chaired the meeting. It was resolved that the trustees proceed to obtain plans and estimates of cost for a new church. In 1957, the Ladies' Guild assisted the Trustees in arrangements for a dinner to celebrate the 90th Church Anniversary and at that function, the New Church Project was launched. The trustees appointed collectors, and the plans for building a new church were put into practice.

April, 1959, saw the commencement of the new building and in May the Rev. G. R. H. Peterson (then President of Conference) laid the foundation stone. The building was completed and opened on 29th November of that year by the new President of Conference, the Rev. A. E. Orr, M.B.E., C.F. The pipe organ completed the furnishings of the church and was dedicated in April, 1960, by the chairman of the

A Century of Witness by E. L. Curnow Jnr.

Franklin District, Rev. C. T. J. Luxton. The church, complete with furnishings, was built at the cost of £16,702/2/7, and opened with a debt of £2634/5/6.



Wesley Church, Pukekohe, opened 1959.

MAUKU

According to early records, services were begun at Mauku shortly after the Maori War. Little is said of Mauku during those early years, but we can surmise that the work flourished, as in 1881 the church at Mauku was enlarged. Mention is made in the minute book that in 1916 the trustees and members were thanked for their work in renovating the church building. Much is left to the imagination, but it seems that Mauku must have suffered a lean time during the next few years according to the following extracts from the minute book:

'October, 1918, Mauku Sunday School decreased for various reasons.'

'March, 1927, Mr A. Needham reported that very few attended services at Mauku. Proposed and seconded that one service be held at Mauku in the coming quarter.'

It seems apparent by this, that Methodist families had moved from the district, but later things improved again when Mr and Mrs H. R. Baigent and family, and Mr and Mrs T. Bowker and their son, moved into the district. Then in 1929 Mr and Mrs. J. Bellhouse and family moved from Pukekohe to Mauku, thus giving Mauku Church a great build up.



Mauku Church

Extracts from the minute book now read:

'April, 1929, proposed and seconded that the request from Mauku for church services be acceded to.'

'October, 1929, Mr T. Bowker presented a request from Mauku Methodists for the opening of a Sunday School.'

This was granted. Later there is a report that a Sunday School had been started with 17 scholars and a good teaching staff.

From that time onwards, with the population in the district increasing, and the advent of more Methodist families, the work has made steady progress. In 1959, because of the need of the Sunday School, it was found necessary for the trustees to build a room on the side of the church. Today, Mauku is a strong church, with a great family spirit among its members.

KARAKA

Minute books state that services were held at Karaka as far back as 1858. Early history reveals that a Mr J. Glasson, a Cornish local preacher, took up land at the Karaka Ferry. The minister of the Manukau Circuit would ride via Papatōetoe to Karaka, swimming his horse across the estuary. Services would be held in Mr Glasson's house on the Saturday, and the minister would then proceed to Waiuku for the morning service on Sunday, then to Pukekohe. According to early plans there were two preaching places at Karaka, but just where the services were held is not stated. Later records reveal that the Karaka Church building as we know it today was the Pokeno Church, which was removed to Karaka in 1917. £83/12/0 was collected toward the cost of removal, and later it was stated that £90 had been subscribed, and it was hoped that the full amount would be raised.



Karaka Church

The Karaka Church was officially opened by the Rev. H. E. Bellhouse in January, 1918. Sunday School is mentioned in the minutes of 1917. Steady progress must have been made by the Karaka Church, as we read in 1924, that the time of service was altered to 11 a.m. instead of 2 p.m., with an extra monthly evening service.

In 1927, the Presbyterians approached the Methodists regarding the use of the Karaka Church for Presbyterian services when it was not being used for Methodist services. A committee was set up to go into the matter, and it was decided to allow the Presbyterians to hold services in the Karaka Church.

Youth work flourished at Karaka, and in 1957, it was found necessary to erect a Youth Hall. The response of the Karaka people to the call for working bees enabled the hall to be erected with the employment of one tradesman to guide them, thus reducing the cost of the building. Work continues in the Karaka Church, and at present, services are held on alternate Sunday mornings by the Methodists and Presbyterians.

BUCKLAND

As early as 1900, records tell that a Mr W. B. Scott waited on the April Quarterly Meeting, and stated the necessity for commencing services at Buckland. The meeting decided to hold services once a month. In 1903, Mr and Mrs G. Bridgman settled in the district and threw in their lot with the Buckland Methodists, who were holding services in the Anglican Church. Both Mr and Mrs Bridgman were local preachers and keen evangelists. In August, 1903, we read that Mrs Bridgman conducted a service but, as was probably at that time a ruling in the Anglican Church that a woman should not occupy the pulpit, the Vicar of the Parish made the request that Mrs Bridgman take no more services in the Church of England. However, by the end of the year the Buckland Methodists had decided to build a church for themselves. Permission was granted at the December Quarterly Meeting, and the foundation stone was laid on April 4th. At the Quarterly Meeting, June 28th, 1904, just six months after permission to build had been given, Mr W. B. Scott reports that the church was up and paid for, the cash raised being £240.



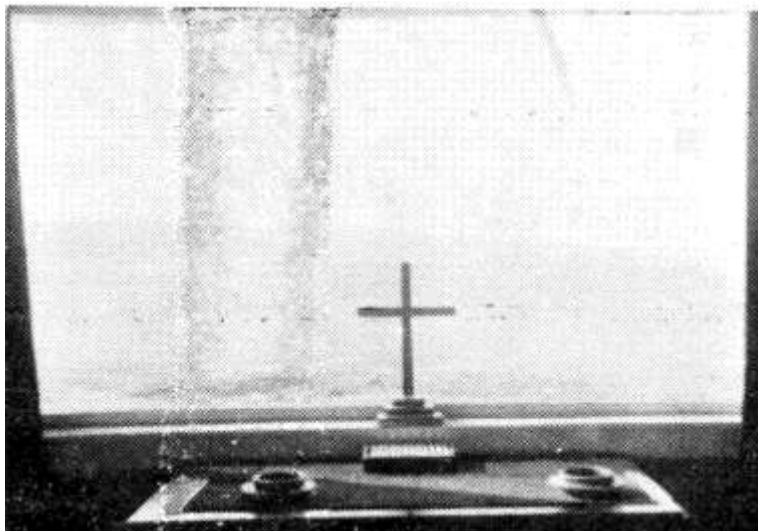
Buckland Church

Soon after the opening of the church, more services were held including evening services. A Sunday School was opened in 1905. During the following years, Sunday School work flourished, and there was also a good choir. In 1917, a vestry, 18ft. by 18ft., was added. Shortly after this, three families left the district, and this was a great loss to the church. The Presbyterians approached the Methodists in 1919, asking for permission to hold services in the Methodist Church, and this was granted.

On April 7th, 1954, Buckland Church celebrated its Golden Jubilee, and following the morning service, which was conducted by the Rev. E. W. Hames, M.A. (Chairman of the Auckland District) luncheon was served in the Public Hall. Vocal items followed speeches and Ro'll Call. Tea was served and the evening service was conducted by the Presbyterian Minister, the Rev. I. Grant. In 1957, the Sunday School work was handicapped by a lack of accommodation, and an extension of 10ft. at the rear of the church was made at the cost of £265. Methodist and Presbyterian services are now held on alternate Sundays in the afternoon.

CHURCH BY THE SEASHORE – CLARK’S BEACH

For a number of years services during the holiday period had been held in the Rev. A. E. Orr's bach at Clark's Beach. As the beach became more popular, so the bach became inadequate to accommodate all who attended services during the summer season. A committee was set up to go into the matter and approach the land owners regarding a section and erecting a church hall. Permission was given that a building be erected, and that the people of all denominations may worship and have social fellowship there. Money was collected, and the building commenced in July, 1953. Built by voluntary labour, and at a cost of about £600, the Church by the Seashore was completed, and opened by Mrs E. L. Curnow, Snr., at Labour Weekend, 1953. Rev. E. W. Hames, M.A., spoke at the opening, and Rev. G. I. Laurenson dedicated the building. Since then during the holiday seasons many have joined in the worship there. Throughout the year a monthly service is held.



Church by the Seashore – Clark's Beach

CARLTON

Services were held once a month commencing in January, 1913. In 1916, some difficulty in holding services arose, and it was decided to discontinue them; lint in January, 1917, a letter was received from Mrs M. Henderson, and Carlton was again placed on the plan.

For some years services were held in Mrs Henderson's shed. Later Mr J. Steenson gave land and a hall was erected, under the auspices of an undenominational trust. For many years this hall was used for services and Sunday School work. In 1921, permission was granted for the Superintendent Minister to meet with the Carlton Committee and make arrangements for a mission to be conducted there. Throughout the years many have received inspiration and blessing at the services held in this hall, but with the passage of time, the advent of the motor car, and the closeness of the hall to Pukekohe, it was decided to discontinue the services. The hall is now being used for a Maori Methodist Sunday School.

WESLEY COLLEGE

On October 7th, 1844, Governor Fitzroy granted in trust to the Rev. Walter Lawry, Superintendent of the Wesleyan Mission in New Zealand, a block of six and three quarter acres of Auckland suburban land in perpetuity for the purpose of a Wesleyan Native Institution. This was the beginning of the Trust which is now vested in the Wesley Training College Trust Board.



The Wesley College Chapel, Paerata.

This takes us back to the days when Auckland was young and the first Methodist College was established for the education of Maori youths. The building stood in Grafton Road, on the land where Trinity College now stands. In 1848, the College was moved to Three Kings, and for nearly 75 years provided for Maori youths and for part of the time the training of candidates for the ministry. The College from 1922 onwards opened its doors to both European and Maori boys, when the college transferred to the new buildings at Paerata and the farm of about 680 acres.

Within the next few years the College received many fine gifts and the boys today benefit from scholarships established then. Among the gifts were two memorials, one of the College hospital, and the other the beautiful Chapel. The Hospital was opened in April, 1927, and the Chapel on February 23rd, 1929. Alterations and additions have

been made in permanent materials to the college buildings through the years, the last being the Assembly Hall.



Wesley College grounds, Paerata

PRINCIPALS

When the college moved from Three Kings, the Rev. J. H. Simmonds continued as principal at Wesley College until 1923. The Rev. Mr Simmonds had served the church and school faithfully from 1895.

Mr R. C. Clark, M.A., Dip.Ed., served the College as Principal with energy and ability from 1924 until the military authorities took over the building in 1942. The Trust in 1942 established the Wesley Preparatory School at Mt. Wellington under the personal oversight of Mr and Mrs Clark.

In 1944, the Rev. E. M. Marshall, B.A., Dip.Ed, was appointed Principal and all know what great progress has been made since then. The Rev. E. M. Marshall is a son of Rev. G. T. Marshall, an honoured and loved minister of our church who was stationed in Pukekohe Circuit at the turn of the century.

Pukekohe Ministers have always appreciated their connection with the College. Until the ordination of the present Principal they carried out chaplaincy duties. Today the Pukekohe Minister conducts the morning service on Sunday and the Principal the evening services.

A Century of Witness by E. L. Curnow Jnr.

As a circuit we are deeply grateful for the help given over the years by the Principals of the college, and the local preachers, mission bands, and the beautiful singing of the choir.

The school roll now stands at 150.

*We love the place, O God,
Wherein Thine honour dwells;
The joy of Thine abode
All earthly joy excels.
It is the house of prayer,
Wherein Thy servants meet;
And Thou, O Lord, art there,
Thy chosen flock to greet.
We love the word of life,
The word that tells of peace,
Of comfort in the strife
And joys that never cease.
We love to sing below
Of mercies freely given;
But O we long to know
The triumph song of heaven!
Lord Jesus, give us grace,
On earth to love Thee more,
In heaven to see Thy face,
And with Thy saints adore. Amen.*

-William Bullock, 1798-1874.

LOCAL PREACHERS

The local preachers make a fine contribution to the effective working of a Circuit. As it is often impossible for the minister to take all the services, it falls to the local preacher to maintain regular services in many places within the circuit.

In these days of easy transport and good roads, it is hard to imagine what was a common experience of our early preachers. To reach an appointment, would often entail hours on the road, and meant walking, riding on horseback, or travelling by buggy. Their glory was to preach the unsearchable riches of the Gospel. The hardships of the past give way before the scientific progress of today. The local preacher is aware that the need of man is unaltered and the call of "Go ye into all the world and preach the gospel" has still to be answered. It would be impossible to mention all the local preachers in the last century but the following are extracts taken from records:

We read in 1912:

"The local preachers have been doing invaluable work and a public meeting of interest was held in the Pukekohe Church. Rev. E. P. Blamires was in the Chair and each of the following (fully accredited) local preachers were presented with a parcel of books. Mr E. Stephenson, Mr C. Bycroft, Mr W. Vant, Mr G. Bycroft and Mr P. Bycroft. Friends from different parts of the circuit bore testimony to their long and faithful service. The local preachers in expressing their thanks told of their increasing delight in the work they love for Jesus' sake."

1946: The much-loved and respected local preacher Mr W. Vant, received a long-service diploma for 41 years of faithful service.

December, 1959: Long-service diplomas were presented to two of our senior local preachers, Messrs T. Bowker and E. L. Curnow, Snr. Mr Bowker has given 48 years service and Mr Curnow 27 years.

April, 1960: A long-service diploma was presented to Mr C. E. Darvill 'he being a local preacher of 68 years standing.' Surely this is a truly great record.

We pay a tribute to the local preachers. Some of them have responded to the 'Higher Call', others have given long and faithful service, and to those who have not been long or are only just starting on the road, the charge is given as to your fathers:

*"To serve the present age,
My calling to fulfil,
O may it all my powders engage
To do the Master's will."*

—(Charles Wesley).

Adult Fellowships

"I accept the call to Christian womanhood, and promise, by God's help to serve the Lord Jesus Christ; to make my Home a place where He is loved, my Church a centre where He is worshipped, my Country a realm where He is honoured."

LADIES GUILD PLEDGE

LADIES GUILD

Records do not reveal just when the Guild was formed but as far back as 1883 we read that it was resolved to hold a Bazaar in Pukekohe. Whether the ladies had anything to do with that bazaar we do not know. It is recorded though that in 1913 the Ladies' Guild donated £3 toward the support of Esther Tupaea who was training to be a deaconess among her people of the Maori race.

During the years the ladies have been instrumental in raising sums of money which have been used in various ways, in the maintenance of the church buildings, parsonage needs, donations to worthy causes. For many years the Annual Sale of Work under different names has been a feature. The last few years the ladies have agreed to work for a Circuit Bazaar instead of the Sale of Work as it was known. This was to assist the circuit, and the proceeds have been divided on a percentage basis between circuit and guild. These bazaars have been on a larger scale and held in a public hall and each year have proved more successful. In 1959, the amount raised was £450, which was felt to be an outstanding effort.

The Guild is also always on call for cups of tea. At social hours, working bees and meetings, where teas are required, you will always find the ladies doing their part.

Perhaps one of the highlights in Guild life during recent years has been the project of our new church. In 1955-56, the ladies felt the need of and offered the trustees their support in the building of a new church. In 1957, the trustees called upon the ladies' guild to assist them with a dinner to celebrate the 90th Church Anniversary. There were 320 present at the dinner and the New Church Project was launched. The ladies arranged a Parcel Post Evening and two small trading tables to start a fund of their own for the new church. For the next few years after the bazaar the ladies set aside £100 each year to go into that fund. With the erection of the church in 1959, and at the laying of the foundation stone and the opening of the new churchy the ladies were called upon more than ever to assist with teas and suppers. At the time of completion of the church the ladies had £426 in their fund to be used on the furnishings. Of this they were very proud.

Apart from raising funds and the dispensing of teas, the guild has taken a keen interest in the church life. The ladies attend to the floral decorations in the church, and the display at Harvest Thanksgiving services, assisting also at times with the cleaning. By

sharing in the various street appeals that are made for worthy organisations, the ladies have played their part in community life.

In the life of the church and community the Guild has met a real need and provides fellowship and spiritual help to the ladies who attend the meetings.

WOMEN'S MISSIONARY AUXILIARY

The M.W.M.A. was formed on July 9th, 1935. Miss Buttle came and addressed the meeting, outlining the aims and objects. For a time the Auxiliary combined with the Ladies' Guild, but in 1937 it was decided to hold their meetings separately once a month instead of once a quarter. Missionaries on furlough and other interesting speakers have addressed the meetings down through the years. Although there was a time when the membership decreased, there have always been a few faithful ones to keep the lamp burning. In 1956, the auxiliary celebrated its 21st Anniversary. M.W.M.A. members of neighbouring circuits were invited to join in the celebrations. Sister Edna White was the guest speaker, and following a thanksgiving meeting in the church, all adjourned to the Sunday School Hall. A social gathering, afternoon tea and the cutting of a birthday cake concluded the celebrations. Through the years there have been many faithful members and office-bearers, a number of whom have passed on to 'Higher Service'. We thank God for their example and faithfulness.

Today, the membership is building up, and the Pukekohe M.W.M.A. endeavours to take its share in assisting the Sisters overseas, and at home, in their work. 1960 marks the quarter of a century for the Pukekohe M.W.M.A.

WOMEN'S EVENING FELLOWSHIP

In 1959, a Women's Evening Fellowship was inaugurated for those who are unable to attend the afternoon meetings. The meetings incorporate the aims and objects of both ladies' guild and missionary auxiliary, and are held monthly. There have been some interesting talks by guest speakers, and these evenings have proved to be times of Christian fellowship for the ladies who attend.

MEN'S FELLOWSHIP

Reference is made that in 1913 a Men's Own Meeting was commenced. Just how long this meeting existed we do not know. At various times since then, attempts have been made to inaugurate a Fellowship, but they seemed to lack enthusiasm and eventually lapsed. In 1958, a fresh start was made, and although the attendance has not been as great as it might be, interesting speakers have been leading the men in their thinking. We trust that the men will rally round, and that this branch of church activity will grow in strength.

CHOIRS

We read that Methodism was born in song. The history of no church would be complete without recognition of the choir, organists and choirmasters, who give of their time and talent voluntarily in the service of the church.

Throughout the years we cannot tell how far-reaching the music and message in song has been. We do know that they are of great inspirational help to the worship. The Junior Choir has its place, too, and the morning services are enriched by the young voices as they sing their praise.

*"Praise ye the Lord, 'tis good to raise
Your hearts and voices in His praise,
His nature and His works invite
To make this duty our delight.*

—(Isaac Watts).

YOUTH

SUNDAY SCHOOL MEMORIES

In looking back to the Sunday School of bygone days many incidents are pictured in the mind. One is the happy memory of the old style Anniversary, with the high platform, and always a hymn with a marching tune that made the children want to keep time with their feet. Then there were the solos and duets, and scripture learnt and recited from memory. The scripture learnt in the days of youth is never forgotten. Many conductors have trained the children down the years. The Anniversary tea was always looked forward to with delight, as also the concert and prize-giving which followed.

PICNICS

Other pleasant memories are of picnic days when all hoped that the weather would be kind and we would have a fine day. Waggon, and later lorries, were used to transport the children and parents to Steenson's or Kirkwood's bush, or maybe for a change to Matuschka's or Bellhouse's farm. What preparation went into those picnics, and how the helpers worked putting up swings and organising games, tugs-o-war and races. And how good the picnic fare tasted.

These 'high days and holidays' have changed with the years. The style of the Anniversary is, perhaps, in some cases more dramatised. The transport and places for the picnics have changed also. The beach seems to hold more attraction for the youth of today, and we now travel by bus or car.

Though times and places change and the way of teaching the children may be different, the Bible and the Christ to whom we are endeavouring to lead the young, are the same; the responsibility of the leaders and teachers for the spiritual guidance given to the children is as great today as it was many years ago. The faithful and devoted service given by teachers and superintendents cannot go by unnoticed, for many young lives have been influenced by that devotion.

BIBLE CLASS

Throughout the years Bible Classes have nurtured the spiritual life of many at an age when doubts assail. Today leaders are called upon for great understanding as they help the youth to face the many problems and temptations that beset their path. It is encouraging to see these young people helping with Corso collections and learning to take their place in the community.

YOUTH CLUB

A youth club was formed a few years ago. Here those of Bible Class age have fellowship and fun as they meet fortnightly.

THESE WE WOULD REMEMBER

1914-1918 First World War

Those were the years when some of our men went forth to defend their country. When the walls of our church heard many prayers for the safety of men and the need for peace. We would remember one of our number who never came back:

JAMES ROWE

1939-1945 Second World War

The peace of the country was again broken twenty-one years later when the Second World War was declared, and once again our men were called to defend their country. Military camps were established on the race course and at Helvetia. As a church our thoughts were with the boys overseas, but a welcome and hospitality was given to the lads of the camps in this district, for they, too, were far from their homes. Social hours and a sing-song after church were popular during those years, and at a Roll Call one evening, it was interesting to note that there were 19 nationalities worshipping in the church. Peace came again, but some of our boys made the supreme sacrifice:

ERNEST MONCRIEF

JACK MILLER

BILL DUNLEVEY

In Closing

LOOKING BACK - LOOKING FORWARD

As we look back, we remember the great work that has been done by our people in Pukekohe and the Circuit Churches, and of the progress made. One cannot mention all who served or are serving so faithfully, because each one has something to offer to our Lord, but may we pay a tribute of thanks to our forefathers for the hardships they endured; that it might be possible for us to write this history, and accomplish what has been accomplished.

Each department of our church has its part to play that the whole church may be worthy of its name. We think of all who through the years have served or are serving in Sunday School, Bible Class, Guild, Auxiliary, Choir, Organists, Trustees, Local Preachers, Home Missionaries and Ministers. We think of those who because of that faithfulness have heard the call of the Master, and they, too, have gone forth from this place to serve as ministers and missionaries: The late Rev. W. Long, Rev. O. E. Burton, Rev. G. I. Laurenson, Rev. L. R. M. Gilmore, Miss E. Crighton (Mrs M. Perry, South America), Miss Both Roose (Thailand), Miss P. Rudolph (Solomon Islands) and also the local preachers.

The new church in Pukekohe has been built and opened and we feel it is a beautiful church and one to be proud of, but we always remember it was made possible by the lives of those who pioneered the way for us, who had the foresight to buy the land, and who worked and upheld the name of Methodism in this area. We are indebted to both past and present members and friends, who gave sacrificially, and the minister, trustees and others who worked untiringly that the new church might be completed in this Centennial Year.

While we admire our new building and rejoice in being able to worship in it, there was to many a tinge of sadness in leaving the old church, as it was a building rich in memory.

It was there that many were brought as infants and baptised;

It was there they sang their first hymns and heard the stories of the Bible;

It was there they attended Bible Class and studied and prayed at Fellowship meetings;

It was there they met the Christ and surrendered their all to Him;

It was there they partook of that highest act of Christian worship, 'the Holy Communion';

It was there they sang in the choir or stood in the pulpit;

A Century of Witness by E. L. Curnow Jnr.

It was there they were received into full membership;

It was from there some went forth to preach the gospel as ministers, missionaries and local preachers;

It was there they were married and later brought their babies to be baptised;

And it was there they paid their last respects to their loved ones.

The old building has been a sanctuary for those with hearts almost broken, and those with hearts filled with praise, for those suffering hardship, and those who were prosperous. It has been a place where all who enter may find the Master.

What has been recorded is only what eye hath seen here on earth. Until His Kingdom comes we shall not know what has been success, or what has been failure. Only then, all things will be known and what seemed to us success, may in His sight rank as failure, and what appeared to be failure, count as success. Of this we can be sure that the greatest wonder of all will be to see Him face to face, and know afresh His understanding and forgiving love to us and all mankind.

At the commencement of the second century, as we go forth to work and worship in a new church, the history of which has yet to be written, and as our lives are blended into that history may we make this our prayer:

*Great God, before Thy throne we bend,
Grant us Thy peace,
Be Thou our Guide, our Master, and our Friend
Till life shall cease,
Grant us always Thy Holy power, O God,
To tread the path Thy followers have trod;
Fill us with zeal to aid the sick and weak,
Lord be our Guide,
Help us to find the noble work we seek
With us abide;
Stretch forth Thy hand, anoint us with Thy love
Till life is ended and we meet above.*

—(Adapted—Author Unknown).

CHRONOLOGICAL TABLE

- 1859—First service held in Pukekohe.
- 1877—July 6th: First meeting of the Pukekohe-Waiuku Circuit held at the residence of Mr John Alien, Hillside, Pukekohe. Those present: the Rev. W. Kirk, President of Conference (Chairman); Rev. S. J. Garlick, Messrs W. H. Barriball, Holmes, J. H. Keith, W. Routley, C. Hosking, E. Roose, T. Walker, W. Salisbury, W. Walters, R. Johnstone, J. Allen, Melville and R. Hobbs.
- 1878—April 3rd: Quarterly Meeting. Chairman, Rev. S. J. Garlick reported that the deed duly signed and contract for the building of the Pukekohe Church had been let to Mr Kcmp for the sum of £245/10/0. 1881—Contract let for the building of the Bombay Church for £300.
- 1882—5 acres of land purchased as parsonage site at Pukekohe for £150,
- 1891—Permission given to remove Pukekohe Church to present site.
- 1892—Permission granted for enlargement of Pukekohe Church.
- 1894—Old church site sold, proceeds devoted to the erection of a porch on the Pukekohe Church.
- 1896—Mr Pyne gave site for Church building in Pokcno Valley. 1897—Pokcno Church removed to Pokeno Valley.
- 1900—September 26th: First wedding in the Pukekohe Church. Miss Annie Usher and Mr J. Patterson. A Bible was presented to them.
- 1904—New Church built in Buckland at cost of £240.
- 1912—Mr E. Stephenson, Mr C. Bycroft, Mr W. Vant, Mr G. Bycroft and Mr P. Bycroft each presented with a parcel of books from the Circuit.
- 1915—April 10th: First meeting of Pukekohe Circuit. Those present: Rev. C. H. Laws (Chairman of District), Messrs T. G. Usher, E. Stephenson, G. Bycroft, J. Pilkington, F. Souster, F. Strickett, J. Gillan, L. Allison, J. Hunter, D. Avery, F. Hubbard, E. Smith, Mesdames C. Bycroft and J. A. Comrie.
- 1918—Karaka Church opened by Rev. H. E. Bellhouse. Electric light installed in parsonage.
- 1919—Presbyterians granted use of Buckland Church.
- 1921—Bombay Trustees make application for building house for Home Missionary.
- 1922—Wesley College moved to Paerata.

A Century of Witness by E. L. Curnow Jnr.

- 1924—Mr G. I. Laurenson, candidate for the ministry. Mr R. C. Clark, M.A., appointed Principal of Wesley College, was Principal until 1942.
- 1926—Evangelistic Mission conducted by Rev. W. T. Hooper.
- 1927—Mr E. C. Frost donated motor cycle for use of Tuakau minister.
- 1929—February 23rd: Smith Memorial Collegiate Chapel opened by Mrs Marian Caughey Smith. Sunday School re-opened at Mauku.
- 1932—Evangelistic Mission conducted by Revs. L. B. Fletcher, J. Kemp and Mr W. J. Mains.
- 1934—Candidate for the ministry, O. E. Burton, M.A.
- 1935—Methodist Women's Missionary Auxiliary inaugurated in Pukekohe. April 1st: Initial meeting of new Pukekohe Circuit. Present: Rev. E. D. Patchett (Chairman of District) in the chair, Rev. J. H. Bailey, Mesdames F. Hubbard, E. Curnow, Miss F. B. Roose, Messrs P. A. Hickling, J. V. Burton, H. J. Craig, J. V. Salisbury, T. Bowker, S. Bowker, A. Richards, R. Seed, F. Smith, J. Patterson, P. T. Field, F. L. Curnow, Snr., E. Le Min Curnow, Jnr., F. Sutcliffe, A. Beatson.
- 1936—Candidate for the ministry, L. R. M. Gilmore.
- 1941—State Advances Corporation purchased the property in Wesley Street for £1,400.
- 1943—Church Anniversary Tea and celebration. A chair of historic value was given by Mrs V. Hubbard. The chair had a brass plate with the following inscription: "This chair was formerly the property of the late Mr Joseph Mayer, of Stockport, one of the founders of the Stockport Sunday School, the largest school in the world. It was at one time used as a pulpit by the Rev. John Wesley, who, when on a visit to Stockport on September 25th, 1765, stayed with Mr Mayer and preached to the people on what was then termed 'The Green', using this chair to stand upon".
- 1944—Rev. E. M. Marshall, B.A., Dip.Ed., appointed Principal of Wesley College.
- 1948—Messrs Lane Tauroa, Wattie Tahere and Rua Rakena candidates for the Ministry.
- 1952—Rev. M. Winiata granted a Nuffield Travelling Scholarship.
- 1953—Church by the Seashore (Clark's Beach) erected. Opened by Mrs F. L. Curnow, Snr.
- 1954—'Fact and Faith' film services held in the Strand Theatre, Pukekohe. First Circuit News was published.

A Century of Witness by E. L. Curnow Jnr.

1955—Mr Justice Stanton laid Foundation Stone of the Assembly Hall, Wesley College. Assembly Hall opened by the Governor General. A special meeting of the congregation held in Pukekohe, chaired by Rev. E. W. Hames (Chairman of Auckland District) it was decided that trustees obtain estimates and cost of new church. Bus trip to hear Rev. Donald Soper in Town Hall, Auckland. Parsonage renovated inside and out.

1956—Following on his year as District Governor, Rotary International 1956/57, Rev. E. M. Marshall was appointed Rotary Counsellor for New Zealand 1957/58. A presentation was made to Mr F. H. Hubbard for long and faithful service as organist of Pukekohe Church.

1957—Miss Phyllis Rudolph dedicated for mission work in Solomon Islands. Buckland Church addition of 10ft. to the rear of the Church, painting and repairs. Youth Hall built at Karaka.

1958— Second minister fund opened.

1959—Room added to Mauku Church.

Trust appointed Mr A. W. Neal, B.Arch., A.R.I.B.A., A.N.Z.I.A., Architect for New Wesley Church, Pukekohe. Engineer: Mr R. M. Tonkin, B.E., A.M.I.C.E. Quantity Surveyors: Messrs Russell, Drysdale and Thomas.

February: Architect authorised to call tenders for new church.

March: Successful tender for new Wesley Church was McKerras Bros., Papatoetoe.

April: Buses travelled to Auckland to the Dr. Billy Graham Crusade.

May: Foundation Stone of New Church laid by Rev. G. R. H. Peterson (President of Conference).

November 29th: Last service in Old Church conducted by Rev. W. L. Divers at 11 a.m.

Wesley Church opened by Rev. A. V. Orr, M.B.F., C.F., President of Conference at 2.30 p.m.

First Service in Wesley Church at 7 p.m. conducted by Rev. E. W. Hames, M.A., and Rev. W. L. Divers.

Superintendent Ministers

- | | | | |
|-------|----------------------|--------|-----------------------------|
| 1877- | Rev. S. J. Garlick. | 1914- | Rev. G. Frost. |
| 1879- | Rev. L. M. Isitt. | 1916 - | Rev. J. B. Suckling. |
| 1881- | Rev. A. C. Caughey. | 1917- | Rev. J. F. Martin. |
| 1882- | Rev. W. L. Salter. | 1920- | Rev. J. Olphert. |
| 1884- | Rev. S. Lawry. | 1924- | Rev. T. Coatsworth. |
| 1887- | Rev. J. Law. | 1927- | Rev. F. T. Harris. |
| 1890- | Rev. T. G. Carr. | 1928- | Rev. H. L. Fiebig, B.A. |
| 1893- | Rev. S. Griffith. | 1931- | Rev. J. H. Bailey. |
| 1895- | Rev. F. B. Oldham. | 1935- | Rev. H. H. Jeffreys. |
| 1899- | Rev. G. T. Marshall. | 1938- | Rev. W.G. Slade, M.A., D.D. |
| 1902- | Rev. C. Penny. | 1943- | Rev. J. A. Daghlish. |
| 1905- | Rev. J. J. Mather. | 1947- | Rev. J. H. Hall. |
| 1909- | Rev. J. Dukes. | 1953 | Rev. T. Skuse. |
| 1911- | Rev. E. P. Blamires. | 1956- | Rev. W. L. Divers. |

WESLEY COLLEGE

- 1948- Rev. E. M. Marshall, B.A., Dip.Ed.

HOME MISSIONARIES

- | | | | |
|-------|----------------|-------|-----------------------------|
| 1900- | J. Richards. | 1915- | A. M. Costain, Dip. Soc.Sc. |
| 1901- | W. A. Porter. | 1916- | A.J.Davis. |
| 1906- | L. O. Stanton. | 1920- | W. T. Hooper. |
| 1907- | M. J. Evans. | 1924- | J. H. Edmondson. |
| 1908- | G. Bycroft. | 1925- | H. Fallows. |
| 1909 | J. A. Lamond. | 1926- | T. H. Carr. |
| 1910- | C. Palk. | 1926- | J. Common. |
| 1911- | A. Laybourne. | 1927- | W. M. Jones. |
| 1914- | A. Fitchctt. | 1929- | J. Belshaw. |
| 1914- | J. H. Cable. | 1933- | E.J.Clarke. |

CIRCUIT STEWARDS

- | | | | |
|---------|------------------------------|-----------|---------------------------------|
| 1877-R. | Hobbs and W. H. Bamball. | 1911 5-F. | Souster and E. Smith. |
| 1880-R. | Hobbs and A. Hodge. | 1917-E. | Souster and J. Pilkington. |
| 1883-T. | Walker and A. Hodge. | 1917-E. | C. Day and O. G. Avery. |
| 1884-T. | Walker and T. G. Usher. | 1919-F.C. | Day and E. Smith. |
| 1903-T. | G. Usher and R. McCowan. | 3921-E. | Smith and J. Patterson. |
| 1908-T. | G. Usher and J. Tetley. | 1924- | J. Patterson and F. J. Wootten. |
| 1912-T. | G. Usher and W. Goldsworthy. | 1930-F. | J. Wootten and J. V. Burton. |
| 1913-T. | G. Usher and J. Pilkmgton. | 1932-J. | V. Burton and R. Vant. |
| 1914-J. | Pilkington and E. Souster. | 1933-J. | V. Burton and R. C. Clark. |

A Century of Witness by E. L. Curnow Jnr.

1934-R. C. Clark and P. T. Field.
1937-P.T. Field and R. L. Seed.
1938-P. T. Field and E. W. Austen.
1939-E. W. Austen and P. Hickhng.
] 941-E. W. Austen and F. Trenwith.
1948-E. W. Austen and G. Buchan.

1951-G. Buchan and F. Trenwith.
1953-F.Trenwith and E.L.Curnow,Jnr.
1955-E.L.Curnow,Jnr.& J. Thompson.
1957-1960-E. L. Curnow, Jnr., and E.
H. Gust.



TRUSTEES NEW WESLEY CHURCH PUKEKOHE 1959

Front row (from left):

E. L. Curnow, Snr.. R. W. Huntigton, Rev. W. L. Divers, W. J. Pilkington, E. L. Curnow, Jnr.

Middle row:

J. S. Thompson, J. H. Coppock, H. T. Chappell, L. G. Middlemiss, T. R. Reid. J. A. R. Ashworth.

Back row:

W. H. Brownlee (Secretary), N. Gallichan (Treasurer), C. R. Miller, A. R. Dreaver, V., M. Praser.

Absent:

K. H. Gust, B. Gallichan, S. Potter.