



CONFERENCE HANDBOOK

Methodist Conference 2016

Wesley College

Te Hāhi Weteriana o Aotearoa

Contents

Welcome to Conference 2016	Page 1
Conference Arrangements Committee	Page 2
Where We Gather	Page 3
<i>Wesley College: What Has Been and Hope for the Future</i>	Page 3
Introduction to Conference	Page 4
Powhiri: Welcome to Conference	Page 5
The Names of Those Who Have Died During the Year	Page 6
General Information	
<i>Directions to Wesley College</i>	Page 7
<i>Registration/Information/Help Desk</i>	Page 7
<i>Parking</i>	Page 7
<i>Telephones and Fax</i>	Page 8
<i>Bank & Postal Facilities</i>	Page 8
<i>Meals</i>	Page 8
<i>Transport</i>	Page 8
<i>First Aid</i>	Page 8
<i>Medical Clinics & Pharmacy</i>	Page 8
<i>After-Hours Medical Centre</i>	Page 8
<i>Fire and Emergency Procedures</i>	Page 9
<i>Other Enquiries</i>	Page 9
<i>The President & Vice-President</i>	Page 9
<i>Chaplains of Conference</i>	Page 9
<i>Conference Hosts</i>	Page 9
What Will Happen at Conference?	Page 10
Other Events During Conference	Page 12
Conference Business Committees and Venues	Page 13
Roles of People & Groups at Conference	Page 14
Conference Contact Numbers	Page 16
Location Maps of the Conference Venues	Page 19

WELCOME TO CONFERENCE 2016

Tēnā koutou katoa. Talofa lava. Malo e lelei. Ni sa bula vinaka.

A warm welcome to all
to the 2016 Conference of the Methodist Church of New Zealand
Te Hāhi Weteriana o Aotearoa

Whether you are coming for the first time or attend regularly, young or old, taking new or long-held responsibilities, here as an observer or invited guest, we hope you will feel at home at Conference and know you have brought your own unique contribution to this gathering. We congregate and commemorate, celebrate and deliberate as a church on a bicultural journey that is nevertheless diverse in its composition. However, together we share the common purpose of being:

Moored to Christ, Moving into Mission

With Wesley College as the venue for Conference, there are tangible reminders of our Methodist heritage, part of our “moorings” and we are grateful to the school for their hospitality. The Conference Arrangements Committee, with members from Trinity College, Te Taha Māori and Vahefonua Tonga and the support of Wesley College, waits to welcome all of us to Conference. We gather, we deliberate and we prepare to move into God’s mission.

The special highlights of the Conference 2016:

- The Conference dinner is planned to include all who register, members and guests.
- A guest speaker at the Saturday evening meal who will refocus our move into the mission through this ‘Let the Children Live’ decade.
- On Monday, Bill Mullally, the President of the Irish Methodist Conference, will share his experience of living out Anglican–Methodist dialogue through the Irish move to a mutual acceptance of ordination.
- Monday to Wednesday worship and Bible studies will be followed by business committee meetings looking at the reports scheduled for that day. We, as the incoming Presidential Team, have decided to make this change so that people can participate in more than one business committee, creating space for more lively discussion in smaller groups on each of the three days.

- Young people are being encouraged to attend and participate in Conference, through helping in practical ways, having time together on Sunday evening, and meeting others who are part of the Methodist Connexion.

Our horizons will be expanded beyond ourselves as we listen to our guests and to each other; all of us are encouraged – and challenged! – to take every opportunity to connect with others over discussions, meals and breaks, and to include those less familiar with the life of Conference.

The Covenant Service concludes Conference and invites us to commit our decisions and our lives to serve God in God's mission as we return home. We pray that it will be with a better sense of who we are and who we are called to be, having started to explore what it might mean to be:

Moored to Christ, Moving into Mission

Prince Devanandan
President

Viv Whimster
Vice-President

Conference Arrangements Committee

On behalf of the Conference Arrangements Committee which is made up of representatives from the Conference hosts of Te Taha Maori, Trinity Methodist Theological College, Vahefonua Tonga O' Aotearoa and Wesley College, welcome to Conference 2016. We hope that your stay at Wesley College, the Franklin District, and the wider Auckland area is an enjoyable one.

For all enquiries please contact the Registration/Information/Help desk.

WHERE WE GATHER

Wesley College: what has been and hope for the future

Wesley College moved to this Paerata site, in 1922, and prior to this the College was at Three Kings. The move to Paerata was made possible when the Methodist Educational and Charitable Purposes Act 1911 brought a number of Methodist Educational resources under the control of the Wesley College Trust Board and provided the financial base for the purchase of this bigger property. The planned move to Paerata was delayed by the 1914 – 1918 war.

Wesley College, Three Kings, was originally the site of Three Kings Wesleyan Native Institution, which was the successor to the Wesley Native Institution founded by a Crown Grant of land at Grafton made by Governor Fitzroy to Rev Walter Lawry, Superintendent of the Wesleyan Mission, on 7 October 1844, for the general purposes of a 'Wesleyan Native Institution'. This school was coeducational. 2014 marks the 170th anniversary of the foundation of Wesleyan education in New Zealand.

The name Wesley College has its origins in the school created for the education of the children of the Wesleyan Missionaries working in the South Pacific that opened in 1850 in Upper Queen Street, Auckland city. This school flourished until the passing of the 1870 Education Act that provided for compulsory free education and the subsequent reduction in demand for a fee paying school. As numbers fell Wesley College, Queen Street, became increasingly unviable and it eventually closed.

The history of Three Kings College reflects the economic and social realities of its era. The school closed for a time during the New Zealand Land Wars as tensions between rival groups within the school were unmanageable. When the College reopened as a boys' only school in 1876 it took the name of Wesley College and Seminary and was in part supported by funding made available by the Trustees of the Queen Street site. For a time theological training for the Methodist Church was based at the Three Kings site.

The former Wesley College, Queen Street, reopened in 1895 and took the name Prince Albert College. Prince Albert College closed in 1906. The land owned by the Prince Albert College Trust became the base for the PAC funds that now have a significant place in the life of Te Haahi Weteriana o Aoteaora – The Methodist Church of New Zealand.

The 1911 Methodist Education and Charitable Purposes Act has as part of its provisions the purpose for the use of funds made available by bringing all

Methodist Educational activities under the control of a single trust. These provisions form the basis of the special character that became enshrined in the 1976 Integration Agreement signed between the Crown and the Wesley Training College Trust Board. The Integration Agreement allowed a former private school to integrate into the State education system and yet maintain a distinctive ethos: expressed in the Special Character.

Wesley College, Paerata, has experienced some difficult times over the years. During the depression numbers fell and during World War 2 the facility was taken over by the United States Army – the school being used as a hospital and there were troops quartered on the farm.

Wesley College has a place in the history of education in New Zealand. Wesley College claims to be New Zealand's oldest school. Wesley College was the first Private School to Integrate into the State System under the terms of the 1975 Private Schools Conditional Integration Agreement. Wesley College was the first all boys' boarding secondary school to introduce female students in 1985.

2016 is an important time in the history of Wesley College. Plans were designed and submitted to the Auckland Council during 2015 for rezoning of the Wesley college site and farmland.

The plans and town design for development of a new Wesley Town is the first step towards another relocation of Wesley College. The goal is to start earthworks for the first 325 sections in October 2016 with the first houses built during 2017. The 300 hectares when complete will be developed into approximately 4500 houses, at least one school, a retail precinct, a rail station and retirement living.

Some of the names that will be used for streets and parks in this new town will reflect the history of Wesley College and the Methodist Church.

INTRODUCTION TO CONFERENCE

For those people who are attending Conference for the first time, there will be an 'Introduction to Conference' session which will explain how Conference works. This will be held in the Music Room (see map), Wesley College, 9.00am – 10.00am on Saturday 1st October.

POWHIRI: WELCOME TO CONFERENCE

The Powhiri (Welcome) to Conference will be held at Te Whare Angitu, The Recreation Centre, commencing at 10:30am on Saturday 1 October 2016.

The powhiri is the formal process of recognising and acknowledging the coming together of two peoples, those of the place of gathering and those from elsewhere. The powhiri is a process that allows us to acknowledge and mourn our dead together, to honour each other to celebrate and share in a communal and family way. We have adapted this process to reflect the bicultural nature of our church and our deeply rooted sense of social justice as we begin our Methodist Conference each year. It belongs to all of us.

Our hosts this year are the iwi of Te Taha Maori, Vahefonua Tonga 'O Aotearoa, and Trinity Methodist Theological College.

Members of conference and guests (manuhiri) will wait at the main entrance carpark of the Recreation Centre. The karanga (welcoming call) will be the signal to proceed led by Te Taha Māori, the Presidential team and the families of the deceased.

The speakers for the manuhiri will take the front row of seats, the families of the deceased will take up the next few rows and all other conference members will enter and take up seats throughout the hall.

Speeches of greetings and acknowledgements will then commence.

At the end of the Powhiri there will be a short break followed by the Opening Worship and Service to Honour Those Who Have Died. The Presidential lunch for the families of the deceased will be served at the Day Centre after the service. Lunch for everyone else will be at the Dining Room.

Please note: No photography is allowed during the Powhiri or other Conference services except by the official photographer. Mobile phones should be switched off.

**THE NAMES OF THOSE WHO HAVE DIED
DURING THE YEAR**

Kepu Moa
Alan John Leadley QSM
Margaret Anne Ziegler
Verna Elaine Mossong QSM
Joyce K. Dey
Gillian Mary Watkin
Mavis Jean Tauroa (nee Dickie)
Winiata Morunga
Mary Russell
Edna Garner
Mervyn Wilkinson Hancock
Siosua Molia Tu'itupou
George MacKay Hammond
Taniela Takapautolo Moala
Gordon Green
Hilda Mary Astley-Ford
Rupeni Balawa Delai

We carry their memories with us into the Powhiri
and on into the life of Conference

GENERAL INFORMATION

Directions to Wesley College

FROM BOMBAY VIA PUKEKOHE

1. Take off ramp at Bombay
2. Turn left at intersection on to Pukekohe East Rd
3. Turn right at East Street intersection
4. Turn right at round about on to Paerata Rd
5. Stay on Paerata Rd, Wesley College is about 6km on the right

FROM DRURY NORTH OR SOUTH TRAVEL

1. Take off ramp at Drury
2. Turn left at intersection on to the Pukekohe/Waiuku Rd if traveling from the South
3. Turn right at the intersection on to the Pukekohe/Waiuku Rd if traveling from the North
4. Stay on same Rd, Wesley College is about 10km on the left

Registration/Information/Help Desk

All registration for Conference will take place at the **Registration/Information/Help Desk** from Friday 30th September. This is situated in the Foyer of Te Whare Angitu, The Recreation Centre (see site map).

The **Registration/ Information/ Help Desk** will be staffed throughout Conference as follows:

Friday 30th September: 11.00am – 5.30pm

Saturday 1st October: 9:00am – 10:45am & 1:00pm – 4:15pm

Sunday 2nd October: 9:00am – 5:00pm

Monday 3rd & Tuesday 5th October: 8:30am – 5:30pm

Wednesday 5th October: 8:30am – 3:00pm

Your **NAME TAG** and **CONFERENCE BAG** will be available for you to collect at this time.

Parking

Parking is available at Wesley College on the field. Parking wardens will direct people to the parking areas. There is no parking available for Conference members around the Wesley College Auditorium. If you have any difficulties with mobility, please note this on your Conference Registration or make it known to a Conference Arrangements Committee member at the Registration desk.

Telephones and Fax

For urgent contact other than your personal cell phones, please ask people to use the following numbers:

Office:	09 2370224
Fax:	09 2383582
Nicola Grundy	0212741957
Te Aroha Rountree	0275353521
Mary Caygill	0272518611
Ali'itasi Salesa:	0274971952

Bank & Postal Facilities

The closest Bank and postal services are available at King St, Pukekohe Town Centre. If you require these services please enquire at the Registration/Information/Help Desk.

Meals

All meals for Conference will be served at Te Whare Roronui, the Dining Room. On Saturday 1 October, families of the deceased will have lunch with the President and Vice President in the Day Centre.

Transport

If you have any transport requirements, please contact the Registration/Information/Help Desk.

First Aid

If you require immediate first aid assistance or treatment, please see the Registration/Information/Help Desk volunteers.

Medical Clinics and Pharmacy

Pukekohe Family Health Care, 10 West St, Pukekohe
09 2370280

Pukekohe Family Doctors, 149 Manukau Road, Pukekohe
09 2386696

After-Hours Medical Centre

Pukekohe Family Health Care Emergency (Phone Service)
09 2370280

Fire and Emergency Procedures

In the event of an emergency, please follow the instructions given by the Wesley College staff. Gathering places will be indicated by them.

For those Conference members staying on site at Wesley College, please make yourself aware of the nearest fire exit.

Other Enquiries

All enquiries other than stated above, please contact the Registration/Information/Help Desk.

The President & Vice-President

Those who would like to see Prince Devanadan or Viv Whimster during Conference should make arrangements through the Chaplains, Peter Norman and/or Kalo Kaisa.

Chaplains of Conference

Peter Norman and Kalo Kaisa are the Conference Chaplains. Peter and Kalo are also available as Chaplains to members of Conference during Conference.

Conference Hosts

Misilei Misilei and Jackie McGeorge are the Conference Hosts. They will be looking after the wellbeing of official visitors, and representatives from other Churches and agencies.

A Reminder

Wesley College is a smoke-free Campus

WHAT WILL HAPPEN AT CONFERENCE?

Venue Locations

Wesley College: State Highway 22, Paerata

Friday 30 September - Wesley College: State Highway 22, Paerata

11:00am – 5:30pm	Registration open in foyer of Recreation Centre
10:00am	Stationing Committee (Day Centre)
<i>1:00pm</i>	<i>Lunch</i>
2:00pm – 5:00pm	Tauiwi Strategy (Taina)
2:00pm – 5:00pm	Te Taha Maori (Day Centre)
5:30pm	Wesley Historical Society AGM/Dinner (\$32.20 incl. GST) registration required (Chapel)

Saturday 1 October - Wesley College: State Highway 22, Paerata

	Registration open 9:00am to 10:45am & 1:00pm to 4:15pm in Recreation Centre
6:45am	Karakia for new Subdivision 'Wesley New Town'
9:30am	Ground Breaking Ceremony for new Subdivision 'Wesley New Town'
8:30am – 9:30am	Evangelical Network Breakfast (Dining Room)
9:00am	Introduction to Conference (Room 5)
<i>10:15am</i>	<i>Families of the Deceased meet with Tumuaki (Lounge – Recreation Centre)</i>
10:30am	Powhiri / Welcome – Please wait in the car park to be called in. (Recreation Centre)
11:30am	Service to Honour Those Who Have Died (Whole Conference)
<i>12:30pm</i>	<i>Lunch for all attendees (Dining Room)</i>
12:30pm	Presidential Lunch with Families of the Deceased (Lounge – Recreation Centre)
2:00pm	Induction Service for President and Vice President
3:30pm	<i>Afternoon Tea</i>
4:15pm	Recognition of Retirees / End of Ministries
5:30pm	Ordination Service Practice
<i>6:30pm – 10:00pm</i>	<i>Evening Meal - with guest speaker (\$32.20 for those not registered for Conference)</i>

Sunday 2 October - Wesley College: State Highway 22, Paerata

9:30am	Conference Worship (Recreation Centre)
10:00am	Te Taha Maori & Tauiwi Meetings
<i>1:00pm</i>	<i>Lunch (for Conference Representatives only – Dining Room)</i>
1:00pm	Lay Preachers meeting and meal (Day Centre) (registration required – no cost)
2:30pm	Ordination Service (Recreation Centre)
4:30pm	<i>Afternoon Tea</i>
	<i>Free time and own arrangements for Dinner</i>
6:00pm	Dinner at Wesley College (Registration essential)
6:00pm	Liberal Society/Evangelical Network Meeting/Dinner (registration required, Petals & Pots Café, 25 Paerata Road, Pukekohe - \$39 incl. GST)
6:30pm	Gay, Lesbian, Bisexual & Transgender Network & Friends Dinner (GLAM) (all are welcome), Paasha Turkish Cafe, Pukekohe http://www.paashaturkishcafe.co.nz RSVP Nan Russell nan@ohug.com or (027) 239 2185

<i>Monday 3 October - Wesley College: State Highway 22, Paerata (Recreation Centre)</i>	
8:30am	Opening Worship: Trinity College
9:00am	- Introduction to Conference Staff, Observers, Visitors, Council of Elders - Consensus Decision Making – reminder of Conference Process - Questions 1-24
9:30am	Business Committees – choose one committee
10:30am	<i>Morning Tea</i>
11:00am	Partnership Reporting, Council of Conference, Te Taha Maori, Tauivi
12:30pm	<i>Lunch</i>
1:30pm	Board of Administration
3:30pm	<i>Afternoon Tea</i>
4:00pm	Methodist Mission Aotearoa / Social Services
5:00pm	Trinity College
6:00pm	<i>Evening Meal</i>
7:00pm	Anglican Methodist Covenant – The Irish Model. President of Irish Conference Rev Bill Mullally followed by a Panel Discussion
8:45pm	Close of Day: Chaplains

<i>Tuesday 4 October - Wesley College: State Highway 22, Paerata (Recreation Centre)</i>	
8:30am	Opening Worship: Trinity College
9:00am	Business Committees
10:00am	Communications
10:30am	<i>Morning Tea</i>
11:00am	Mission Resourcing
12:00pm	Ex-President and Ex-Vice President's Reflections
12:30pm	<i>Lunch –</i>
1:00pm	<i>Lunch-time Communion</i>
1:45pm	Mission Resourcing continued
2:30pm	Mission and Ecumenical
3:30pm	<i>Afternoon Tea</i>
4:00pm	Social Issues (Public Issues Network)
5:00pm	Faith and Order
6:00pm	<i>Evening Meal</i>
7:00pm	Overseas Guests
8:45pm	Close of Day: Chaplains

<i>Wednesday 5 October - Wesley College: State Highway 22, Paerata (Recreation Centre)</i>	
8:30am	Opening Worship:
9:00am	Law Revision
9:30am	Unfinished Business
10:00am	<i>Morning Tea</i>
10:30am	Unfinished Business
1:00pm	<i>Lunch</i>
2:00pm	Covenant Service
3:00pm	Close of Conference

OTHER EVENTS DURING CONFERENCE

Conference is an opportunity for a number of Methodist groups to host special purpose gatherings. Full details have been publicised by the groups concerned and in some cases advance notice is required for catering purposes.

Wesley Historical Society AGM and Dinner

Friday 30th September, 5:30pm.

Dinner in the Dining Room followed by the AGM and lecture in the Chapel.

The Evangelical Network Breakfast

Saturday 1st October, 8:30 - 9:30am in the Dining Room

Lay Preachers AGM and Meal

Sunday 2nd October, 1:00pm in the Day Centre

The Evangelical Network & the Liberal Society Dinner

Sunday 2nd October, 6:00pm at Petals & Pots Café, 25 Paerata Road, Pukekohe

Gay, Lesbian, Bisexual and Transgender Network and Their Friends Dinner – Sunday evening 2nd October

Sunday 2nd October, 6:30pm at Paasha Turkish Café, Shop 6, 245 King Street, Pukekohe <http://www.paashaturkishcafe.co.nz>

RSVP Nan Russell nan@ohug.com or (027) 239 2185 (all are welcome).

CONFERENCE BUSINESS COMMITTEES AND VENUES

Monday

- | | |
|----------------------------|----------------------------------|
| 1. Board of Administration | <i>Auditorium</i> |
| 2. Trinity College | <i>Lounge, Recreation Centre</i> |
| 3. MMA/Social Services | <i>Maia</i> |
| 4. Council of Conference | <i>Taina</i> |

Tuesday

- | | |
|---------------------------|----------------------------------|
| 1. Mission Resourcing | <i>Auditorium</i> |
| 2. Mission and Ecumenical | <i>Lounge, Recreation Centre</i> |
| 3. Faith and Order | <i>Maia</i> |
| 4. Social Issues | <i>Taina</i> |
| 5. Communications | <i>Chapel</i> |

ROLES OF PEOPLE & GROUPS AT CONFERENCE

President

Rev Prince Devanandan fills an important pastoral role in the life of Conference and beyond. He shares leadership with the Vice-President and brings a sacramental ministry to the Conference.

Vice-President

Mrs Viv Whimster shares with the President in the leadership role of Conference, and brings a pastoral concern, as well as sharing in the leadership team.

Tumuaki

Rev Diana Tana fills this position and provides leadership for Te Taha Maori.

General Secretary

The General Secretary, Rev David Bush, acts as the Secretary of Conference and has responsibility for the ordering of the Theology at Work (Business) Sessions of Conference. He is responsible for seeing that the reports are collated and that the business of Conference is dealt with.

Council of Elders

Present at Conference will be members of the Council of Elders. The Council consists of four people, two representing Te Taha Maori and two representing the Tauwiwi part of the Church (i.e. Pakeha, Pacific Island, African, Asian etc).

Their responsibilities include observing the way things are said and decided at Conference, against the background of the Church's bi-cultural journey. They may take opportunities to comment on what they see happening, and may intervene if they believe something taking place is contrary to the Church's bi-cultural commitment.

When a member of the Council speaks in Conference it is on behalf of the whole Council and after consultation with **all** Elders. The Council seeks to model an equal partnership, with half the Elders representing Te Taha Maori and half Tauwiwi (the rest of the Church), and makes its decisions through consensus.

Legal Advisor

Ruby Manukia- Schaumkel is appointed by the Conference and attends the Conference to ensure that the finer details of Church Law are adhered to. Presently the Legal Adviser checks all decisions that come to Conference, so as to ensure that the decision can be understood at a later date.

Te Taha Maori & Tauwi

Are the partners who make up the life of Conference. Te Taha Maori are Tangata Whenua (the people who are of the land). Tauwi is the name used within The Methodist Church of New Zealand/Te Hahi Weteriana o Aotearoa to describe the people who have come later to settle here from Europe, Asia, the Pacific, Africa, and other places.

Council of Conference

Conference has appointed a Council of Conference made up of 23 members. Ten members are nominated by Te Taha Maori and ten members nominated by Tauwi. The President, Vice-President and General Secretary are members and act as resource people. The work of the Council is focused on vision, policy and monitoring processes for the Church, rather than decision-making.

Wasewase ko Viti Kei Rotuma

The Fijian Synod of the Methodist Church.

Vahefonua Tonga 'O Aotearoa

Vahefonua is the Tongan Synod of the Methodist Church which meets during the year to make decisions relating to the life and work of Tongan Congregations.

Sinoti Samoa

The Samoan Synod meets through the year and makes decisions relating to the Samoan section of the Church. It reports to Conference.

Boards & Standing Committees

The Conference has a number of Standing Committees that meet throughout the year. Each carries out tasks asked of them by Conference and reports to the Conference. The Committees relate to matters such as Ministry, Faith and Order, Mission and Ecumenical and Social Issues.

Youth Delegation

The Conference has determined that there will be a youth delegation of 10 present at Conference. In addition, individual parishes may choose to nominate a youth person to represent them. The Youth Delegation tends to sit together in order to caucus as youth and sometimes comment to Conference as youth.

CONFERENCE CONTACT NUMBERS

The names and phone numbers listed here are for the information of Conference members and Conference staff only. They are based on information supplied on your registration form.

The list is complete up to registrations as at 1 September 2016 and is in alphabetical order by first name.

Abhishek Solomon	021647164
Adrian Skelton	0275599042
Afu'alo Kalonihea	02108160283
Aifimalie Mataia-Alefosio	0210622691
Aisea Laukau	0223026614
Akanesi Havea	0226852506
Alamaine McGregor	0210274599
Ali'itasi Aoina-Salesa	0274971952
Alisa Lasi	0211181774
'Alisi Moe'ia Taufalele	0211141315
Alison Molineux	02108809690
Alison Ranui	0274116037
Alivereti Uludole	0211437974
Alofa Asiata	0272106328
Amos Muzondiwa	0210745706
'Anaseini Nuku	02102596427
Andrew Doubleday	0273249540
Angela Graham	0276601611
Anne Peri	021 0619045
Anne Preston	0210341394
Arthur Davis	021707046
Augusten Subhan	0226527946
Barbara Peddie	02102431577
Barbara Richardson	0220803485
Barbara Watson	0279524281
Bella Ngaha	0274209945
Beth Muir	0275020507
Beverley Fergus	
Bill Peddie	092984249
Brenda Fawkner	0273387400
Catherine Hodges	0226380625
Chris Johnston	021845832
Christine Peak	0211320926
Courtney Manukia	0210408511
Dale Peach	0274362698
David Ahn	021814566
David Bush	021392500

David Davies	0272891727
David Hunt	0272734680
David McGeorge	02102891213
David Poultney	
Diana Tana	0274431340
Dianne Cloughton	
Dianne Sundberg	0121899124
Digby Prosser	0210796255
Dilys Davies	0274193633
Don Biggs	021479815
DongGuk Shin	0210701511
Doreen Lennox	0210523696
Doreen Wilson	0224567920
Doug Graham	0211647732
'Etuini Talakai	0276767053
Faiva Alaelua	0210507949
Falaniko Mann-Taito	0212653586
Faleatua Fa'atoafe Faleatua	0210695777
Fenukimoeata Ha'unga	02108101054
Frances Rakena	0212536898
Freddy De Alwis	0221588661
Gillian Laird	02108339847
Goll Fan Manukia	02451557
Graeme White	021793516
Greg Wright	021337890
Harry Tawhai	0211173453
Heather Walls	
Hilda Hughson	0273437770
Holakitu'akolo Paea	092741183
Hosea Tupou	021492409
Hugh Garlick	0274943905
Hui Young Han	098329910
Iakopo Faafuata	021971012
Ian Boddy	0211090454
Ian Faulkner	021426747
Ian Harris	0272333436

Ieremia Amani Amituana'i	0273780206
Ilaitia Sevati Tuwere	0211794915
'Iloa-He-Lotu Lihau	0273237904
Isaiah Kainiu	0279106590
Jackie Mc George	0272235915
Jan Fogg	0210606970
Jan Tasker	0273208182
Jannet Mudavanhu	0274374540
Jean Faithful	0276867700
Jikyum Kim	0211919114
Jill Hawkey	0211574692
Jill van de Geer	0274670077
John MacDonald	0274842221
Julie Pearse	0212794280
Julie-Anne Barney- Katene	0279399345
Kalo Kaisa	0278629454
Kathleen Tuai- Ta'ufo'u	0211085597
Kathryn Walters	0211563028
Keita Hotere	0223617447
Kelvin Aird	021304845
Ken Olsen	
Kuli Fisi'iahi	0275020507
Laura Black	0274664600
Leatuavao Viko Leatuavao	0211820609
Leigh Sundberg	02102835358
Lesley Milne	0211219430
Limu Isaia	02040147888
Lolila Faitotoa	02102692626
Lupeti Finau	0278254866
Luse Fisiiahi	0275020507
Lusia Taloafulu	0291225314
Lyn Heine	0212598150
Lynne Frith	021659112
Lynne Scott	
Manoa Havea	0279714378
Marama Hotere	0224683730
Margaret Austen	0276475311
Margaret Birtles	0212606504
Margaret Smith	021473534
Marilyn Welch	0272870757
Marion Hines	093766583
Mary Caygill	0272518611
Mary Nicholas	0276869777
Mary West	02102626031

Matafonua Langi	02102217086
Mataiva Robertson	0210534894
Maungarongo Tito	0275249841
Maureen Akeripa	02108373387
Megan Alley	02108359854
Meleane Nacagilevu	0211716094
Melema'u Molitika	0212623826
Mema Faioso	0211438750
Mereana Meleisea	021828860
Metuisela Tafuna	021998232
Michael Greer	021632716
Michael Lemanu	0210791593
Mickey Teo	0211054682
Misilei Misilei	02102714099
Motekiai Fakatou	0272955012
Muaimalae Salemona Teo	0278507342
Nasili Vaka'uta	021570387
Neti Petaia	0279372063
Ngairi Southon	02102245165
Nicola Grundy	0212741957
Nowell Manumau'a	0210667318
Olive Tanielu	0276718153
Opeta Amani	0292006310
'Osaiasi Kupu	0211421360
Paewhenua Nathan	092370224
Pam Davis	
Paul Titus	021655092
Paula Taumoepeau	0274315460
Pauliasi Alofi	
Pauline McKay	0212891225
Paulo Ieli	0211654658
Peni Tikoinaka	02102249024
Peter Norman	0273787042
Peter Taylor	02040799607
Peter Williamson	0211339105
Prince Devanandan	0211686279
Rachael Masterton	0272373180
Raymond Mudford	021987606
Rex Nathan	0274744750
Richard Biddle	0220186968
Robyn Allen-Goudge	0210615202
Ron Malpass	0276670760
Rosa Faafuata	021971012
Ross McGwan	021215991
Rowan Smiley	0274577618
Roz Wilkie	0274481814

Ruby Manukia-Schaumkel	021819297
Saikolone Taufua	02102688103
Senorita Laukau	0211500461
Sharon Tito	027 5249841
Shirley Rivers	0276522323
Silakivai Terepo	02102201219
Simote Taunga	0210333385
Sioeli Havea	0212676244
Sione Molitika	0220645840
Siosifa Pole	0272412926
Sireli Tawake Kini	021931461
Sonny Livingstone	02102284487
Suiva'aia Teo	0276841573
Sunia Ha'unga	0272367897
Suresh Chandra	0273462747
Susan Thompson	0210570913
Tania Shackleton	0226857688
Tau Lasi	0211863342
Tavake Manu	0272498967
Te Aroha Rountree	0275353521
Te Wehenga Laird	021950090
Terry Wall	02108301510
Tevita Finau	0211501970
Tevita Taufalele	0272498221
Thelma Efford	0272951834
Thelma Vilo	0277648494
Tony Franklin-Ross	021481816
Trevor Hoggard	021570385
Uesifili Unasa	02102231664
Utumau'u Pupulu	021842883
Vaituulala Ngahe	0273206841
Valerie Marshall	0272735475
Viv Whimster	0211372349
Wendy Anderson	0210750807
Wendy Keir	0272228878



Pakeke

Whare Runanga

Taina

Chapel

Maia

Classrooms 1-4

Classrooms 5-9

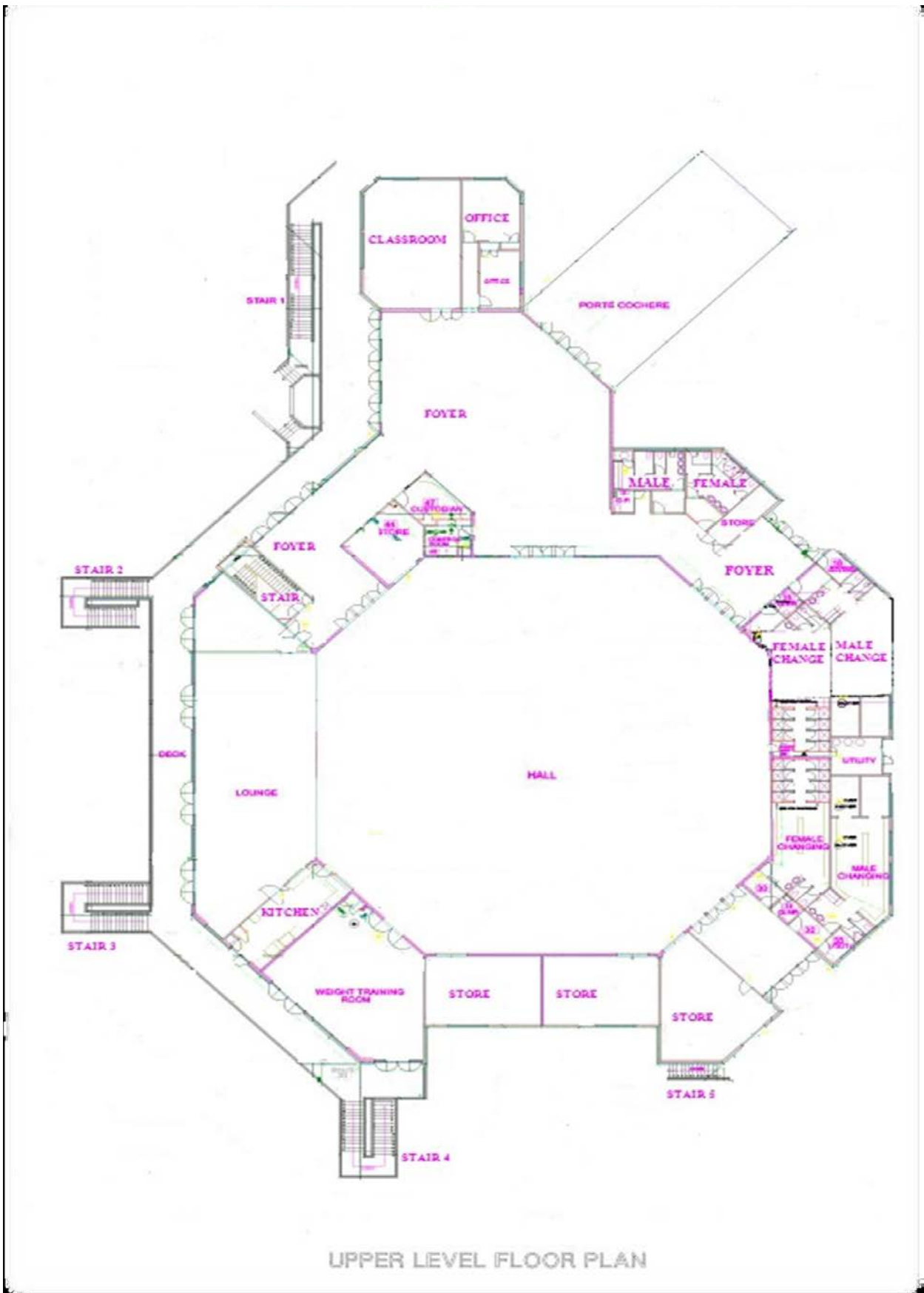
Dining Room
Rourou Nui

Conference
Registration

Day Centre

Recreation
Centre

Te Paea



UPPER LEVEL FLOOR PLAN