



# INTRODUCTION TO CONFERENCE

Methodist Conference 2013

*Wesley College*

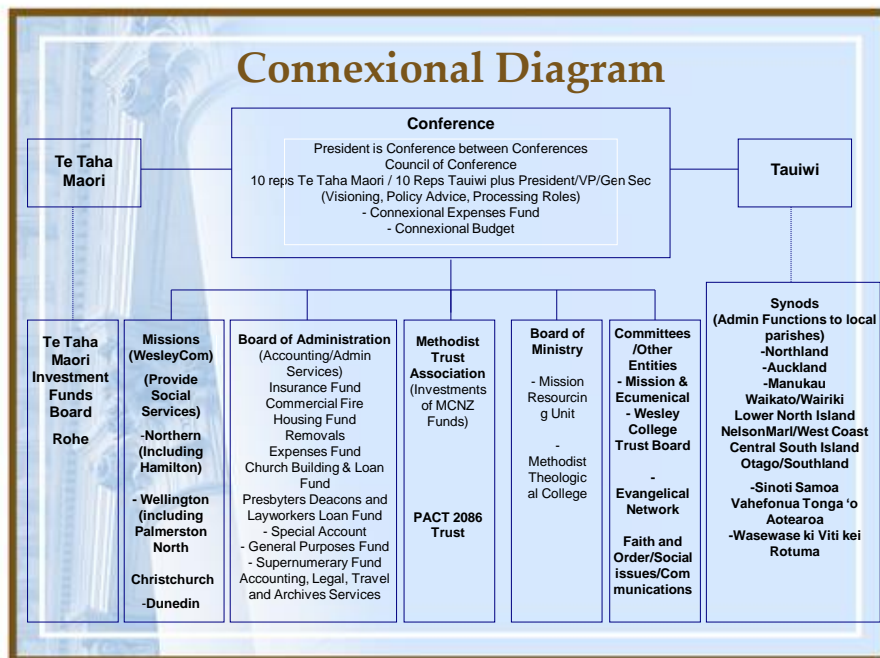
Te Hāhi Weteriana O Aotearoa

# THE ANNUAL METHODIST CONFERENCE

There are three levels of organisational life with Methodism:

- Locally – the Parish
- Regionally – the Synod
- Nationally – the Annual Conference, the supreme court of the Church.

Below you will see a diagram which sets out the structure of the Church as it relates to the Conference.



Every ordained Methodist Presbyter and Deacon is entitled to attend the Conference, and each Parish is entitled to send one lay representative to Conference for every Minister appointed to the Parish. The parity of lay and clergy representation is very important in the ethos of Methodism and was a principle established by John Wesley himself.

The Conference is about being Methodist at a national level, in the way we live in society and the way we do our mission by:

- Affirming what has been done in the past year
- Hearing how things are at the moment
- Setting the agenda and priorities for the year ahead

**It is not a place where local congregations seek solutions to their problems – this is the role of Synod and Synod Superintendents.**

**The Annual Conference has two distinct phases:**

### **Phase One Inspirational**

**This Year all Conference events are being held at Wesley College, Paerata.**

Conference begins on Saturday with a Powhiri. During the Powhiri tributes are made to those Presbyters and Lay People who have died during the year. This is followed by the Conference opening service where we will continue to honour those who have died. The whole of Conference shares lunch during which the President and Vice-President gather with the families of the deceased. In the afternoon tributes are paid to Ministers who are retiring from active service.

Conference gathers again at 6.30pm in the College dining room. The Presidential Team will give their address during the dinner and entertainment will be provided.

On Sunday morning at 9.30 there will be brief opening worship followed by Te Taha Maori and Tauwiwi meetings. Taha Maori will gather in Te Whare Pakeke and Tauwiwi in the Chapel. The Ordination service, is in the recreation centre, and is where Conference formally acknowledges those who have been through a period of theological education and probationary ministry and have been assessed as ready for ordination as well as receiving ministers from other churches into Full Connexion.

The Conference timetable lists other gatherings to which all Conference members are invited e.g. The Wesley Historical Society dinner and lecture, the Evangelical and Liberal network gatherings etc.

### **Phase two – The Business Sessions**

On Monday morning of Conference:

- Questions 1 -24 presented en bloc  
These questions list every presbyter in full connexion and their status for the following Connexional year

The Stationing sheet also lists any lay person appointed to a parish as a lay minister

- The Te Taha Maori Caucus and Tauwiwi Caucus will meet from 9:30am - 10:30am to discuss their nominations for President and Vice-President.
- The Business Committees will meet from 11:30am - 12:30pm. These are the groups you selected on your registration form and there will be lists on a prominent notice board.
- Conference business commences at 1:30pm with begin with partnership reporting from Council of Conference then all other Committees follow over the next days of conference

**Consensus Decision Making** (familiarise yourself with the process on blue page 9 of the Agenda)

As part of its commitment to Bi-Culturalism and power-sharing, Conference has adopted some principles for making decisions. These are:

- A decision is only made when it is clear that both partners- Taha Maori and Tauwiwi can state that they agree with the suggested decision.
- Taha Maori or Tauwiwi may caucus if this will enable their group to reach agreement so a partnership decision can be explored.
- When the partners do not agree, no decision can be made.

### **Who is able to take part in Conference?**

Any person who is a full member of the Conference may speak. If you wish to speak you would normally raise your hand to indicate you wish to do so and then you would move to the nearest microphone. If there are a number of people wishing to speak they often sit in order near the microphone and await their turn.

When you stand to speak you would first acknowledge the President or Vice-President – whichever one is in the chair by saying:

“President Rex or Vice-President Jan, members of Conference”, then immediately follow with your name and who you represent e.g. “Jennifer Blow, Dunedin Parish”.

State your point of debate clearly and succinctly. Do not repeat the arguments of previous speakers. You may also move to a microphone to ask for clarification if something is not clear.

### **Who are the key people involved?**

#### **The Presidential Team**

President:	Rev Rex Nathan
Vice President:	Jan Tasker
Ex President:	Rev John Roberts
Ex Vice President:	Olive Tanielu

#### **Selection process for**

**President/Vice-President Elect:** Tauwiwi will agree on its names to go forward to the 5+5 selection group as will Te Taha Maori. The 5+5 will reach a consensus and report this to the Conference

#### **Elders**

The Council of Elders enable and assist the Church in its Bi-cultural Journey by seeking to model the equal partnership prefigured in the Treaty of Waitangi, and specifically it may:

- (a) monitor recommendations of all Conference Committees and Boards of the Conference;
- (b) reflect and comment on the style, work and priorities of all Conference Committees and Boards;
- (c) refer back for further consideration any report or recommendation which the Council of Elders considers will hinder or divert the Church from its Bi-cultural Journey;
- (d) report each year to the Conference.

The Council of Elders is appointed each year at Conference and consists of two people nominated by Te Taha Maori and two people nominated by Tauwiwi Strategy and affirmed by the Tauwiwi meeting.

The current Elders are: Sharon Tito and Frances Rakena for Te Taha Maori and Ron Malpass and Gloria Zanders for Tauwiwi.

## **Conference Staff**

General Secretary	:	Rev David Bush
Associate Secretary	:	Bruce Anderson
Office Staff	:	Wendy Keir
	:	Peter van Hout
	:	Greg Wright
Daily Record	:	Peter Norman
	:	Alison Molineux
Journal Secretary	:	Martin Oh
Business Sheet Updates	:	Nehu Te Pou
	:	Ahbi Solomon
Legal Adviser	:	Ruby Manukia-Schaumkel
Chaplains	:	Arapeta (Bella) Ngaha
	:	Jill van de Geer
Hosts	:	Tony Franklin-Ross
	:	Valeti Finau

## **BI-CULTURAL PARTNERSHIP LEADERS**

Tumuaki:	Rev Diana Tana
Tauwi Executive Officer:	Rev Aso Samoa Saleupolu

## **How to read your Agenda**

• Timetable	pp 2 - 3
• List of groups reporting to Conference	p 4
• How conference Works	pp8-13
• Members of Conference	pp14 -19
• Business Committees:	
A: Council of Conference	A
B: (i) Te Taha Maori	B(i)
B: (ii) Tauwi	B(ii)
C: Law Revision	C
D: Administration	D
E: Ministry	E
F: Faith and Order	F
G: Social Services	G

H: Mission and Ecumenical	H
I: Communications & Organisations	I
J: Social Issues	J
Nominations for President & Vice-President	K
Tributes to the deceased	L
Record of Service for Retirees	M
Statistics	N
Index	

## **CONFERENCE QUESTIONS**

Conference operates by answering 43 questions and is not complete until all questions are answered. The business of Conference 2013 will be conducted under the following questions:

### **LAWS AND REGULATIONS SECTION 7**

11. 2: The official work of the Conference, comprised under the Questions constituting the ordinary routine of business, shall be introduced by the Secretary.

#### **The Questions are:**

1. Who are members of this Conference?
  - (a) those in Full Connexion.
  - (b) ordained Deacons
  - (c) representatives
  
2. What Members from other Conferences and Churches are associated with this Conference?
  
3. What Candidates are now received for training?
  - (a) Deacon
  - (b) Presbyter
  - (c) Minita-a-iwi

4. Who are to continue in training for ordained ministry?
  - (a) Deacon
  - (b) Presbyter
  - (c) Minita-a-iwi
  
5. Who are to be stationed by Conference as Probationers?
  - (a) Deacon
  - (b) Presbyter
  - (d) Minita-a-iwi
  
6. Who are now admitted as Presbyters or Deacons in Full Connexion with the Conference?
  - (a) those who have completed their probation
  - (b) from another Church
  
7. Who are now ordained Deacon or Presbyter?
  - (a) Deacon
  - (b) Presbyter
  
8. What Minita-a-iwi:
  - (a) are received as candidates
  - (b) have completed their training
  
9. (a) What Deacon(s) is reinstated into Full Connexion?  
(b) What Presbyter(s) is reinstated into Full Connexion?
  
10. (a) What Deacon(s) now cease to be recognised as in Full Connexion with the Conference?  
(b) What Presbyter(s) now cease to be recognised as in Full Connexion with the Conference?  
(c) What Presbyter(s) now cease to be recognised as a Probationer with the Conference?  
(d) What Deacon(s) now cease to be recognised as a Probationer with the Conference?  
(e) What students are discontinued in their training?



11. What appointments are authorised to provide remuneration at a rate less than Standard Stipend?
- A. For full-time or part-time Local Ministries (with no remuneration) with Ministry Covenant (full or part-time):
- (a) Deacon
  - (b) Presbyter
- B. For part-time Ministries (remuneration pro rata) with a Ministry Covenant:
- (a) Deacon
  - (b) Presbyter
12. What Deacon(s) or Presbyter(s) is transferred to, or is now exercising ministry in, another Conference or Church, whether overseas or in New Zealand, and has the right to return to the Conference on the completion of service with that Conference or Church?
- (a) Deacon
  - (b) Presbyters
13. What Deacon(s) or Presbyter(s) has been received from another Conference or Church?
- (a) Deacon
  - (b) Presbyter
14. What are the decisions of Conference on Disciplinary matters?
- (a) Which are required to be reported to the Conference?
  - (b) Which have been processed during the preceding year, under the Disciplinary Code?
15. For what Deacon(s) or Presbyter(s) is no appointment available?
- (a) Deacon
  - (b) Presbyter
16. What Deacon(s) or Presbyter(s) are not available for Stationing this year? (all ministries recorded under this question shall have prepared a Ministry Covenant)
- (a) Deacon

- (b) Presbyter
- (c) Chaplaincies
- (d) Other

17. What Deacon(s) or Presbyter(s) retire at this Conference?

- (a) Deacon
- (b) Presbyter

18. What Deacons and Presbyters continue in retirement?

- (a) Deacon
- (b) Presbyter

19. What Deacons, Minita-a-Iwi and Presbyters have died since last Conference?

- (a) Deacon
- (b) Minita-a-Iwi
- (c) Presbyters

20. What Laypersons who have given leadership in the Conference have died since last Conference?

- (a) Te Taha Maori
- (b) Tauwi

21. (a) Are there any congregations where, for imperative pastoral considerations, others than Presbyters should have authority to administer the Sacraments?

- (b) Who are now given special authority to administer the Sacraments?

22. (a) Does the Conference sanction the amalgamation or division of any District or Parish?

- (b) What other Agreements affecting Parishes and/or Use of Buildings are approved by Conference?

23. (a) To what Parishes/Rohe are additional Deacons, Minita-a-Iwi or Presbyters appointed?

- (b) From what Parishes/Rohe are Deacons, Minita-a-Iwi or Presbyters withdrawn?
24. How are the Presbyters, Deacons, and Minita-a-Iwi stationed for the ensuing year?
25. What are the decisions of Conference on matters relating to the Council of Conference?
- (a) What is God saying to us now?
  - (b) What more can be done to promote the work of God?
  - (c) Connexional Budget
26. (i) What are the decisions of Conference on matters relating to the tangata whenua, Te Taha Maori?
- (a) Grey Institute Trust
  - (b) Wellington Charitable and Educational Endowments Trust.
- (ii) What are the decisions of Conference on matters relating to Tauivi?
- (a) Tauivi Strategy
  - (b) Evangelical Network
  - (d) New Zealand Methodist Women's Fellowship
  - (e) Wasewase Ko Viti Kei Rotuma
27. What are the decisions of Conference on matters relating to Law Revision?
- (a) New or amended laws to be brought to Conference
  - (b) Presidential Rulings which have been made during the year
28. What are the decisions of Conference on matters relating to the Administration Division?
- (a) Investment Advisory Board
  - (b) Methodist Trust Association
  - (c) Connexional Trusts
  - (d) PACT 2086 Trust
  - (e) PAC Distribution Group
  - (f) Robert Gibson Trust

- (g) Statistics
- (h) Wesley Historical Society
- (i) Travel & Study

29. What are the decisions of Conference on matters relating to Ministry?

- (a) Mission Resourcing
- (b) Ministry Education (Trinity College)
- (c) Churches Education Commission
- (d) Diaconate Task Group
- (e) Lay Preachers
- (f) Tauwi Youth
- (g) Uniting Congregations of Aotearoa NZ
- (h) Chaplaincies
  - i. Tertiary
  - ii. Hospital
  - iii. Defence Force
  - iv. Prison
  - v. Wesley College

30. What are the decisions of Conference on matters relating to Faith and Order?

31. What are the decisions of Conference on matters relating to Methodist Social services?

- (a) Methodist Mission Aotearoa
- (b) Methodist Mission Northern
- (c) Wesley Wellington Mission
- (d) Christchurch Methodist Mission
- (e) Dunedin Methodist Mission
- (f) Palmerston North Methodist Social Services
- (g) Hamilton Methodist Social Services

32. What are the decisions of Conference on matters relating to Mission and Ecumenical affairs?

- (a) Mission and Ecumenical Committee
- (b) Christian World Service

33. What are the decisions of Conference on matters relating to Communications and Organisations?
- (a) Methodist Publishing
  - (b) PAC Communications Endowment
34. What are the decisions of Conference on matters relating to Social Issues?
- (a) Public Questions Network
  - (b) Inter-Church Bio-ethics Council
37. (a) Who is elected President of the Church for induction at the next Conference?
- (b) What arrangements are made for the President's supply?
38. (a) Who is elected Vice-President for induction at the next Conference?
- (b) What arrangements are made for the Vice President's supply?
39. Who is elected the President's Legal Adviser?
40. Who are elected to the following Synod and Regional positions for the ensuing year?
- (a) Superintendents
  - (b) Secretaries
  - (c) Financial Secretaries
  - (d) Property Secretaries
41. Who are appointed as members of the following Standing Committees and their Conveners?
- (a) Pastoral Committee
  - (b) President's Committee of Advice
  - (c) Council of Elders
  - (d) Budget Task Group
42. When and where shall the next Conference be held?
43. When shall the Annual Synod and other Synod Meetings be held?

## **How to get the most out of Conference for yourself**

- Each day set yourself a goal of achieving 3 things you would not normally do
- Eat with different people/cultures
- If you don't understand things – ask someone! Knowledge is power!
- Volunteer for a task you never tried before.
- Be prepared to give a clear and well presented report to your congregation on Sunday 13 October 2013.