

TAUIWI STRATEGY & STATIONING

Tauwi Strategy continue to work within the stated purpose of the committee, “to give expression to the partnership between the cultural groups within Tauwi and other expressions of diversity and to pursue visioning, strategy, planning and decision making on behalf of Tauwi”.

The August meeting was bracketed by worship sessions around the theme “Together in Christ as Tauwi”. The theme was about being church together, identity, diversity, and our unity in Christ. Members of the committee led these worship sessions creatively and there was considerable affirmation of the variety, challenge and depth of input.

Commissioners Report

Tauwi received the Commissioners initial and subsequent reports. Discussions on matters relating to Tauwi structures and processes are on-going.

Stipends Review Group

Tauwi Strategy addressed seven recommendations from the Stipends Review Group report to Conference 2007, which had been referred back to the church for further discussion. These related to job descriptions and ministry tasks for part time appointments, presbyter medical/health insurance, setting of remuneration packages for Connexional appointments, responsibility margins, and the establishment of a task group to review the regional and national structure of Conference and Synods.

Tauwi Strategy identified some areas that it believed needed further detail to enable informed decisions to be made, but supported in principle the general thrust of the recommendations. Responses to each recommendation were made to the Stipends Review Group.

Continuous Stationing

The committee confirmed the following regarding Continuous Stationing: Continuous Stationing is a process which may be used when a parish is not able to be stationed in a previous year, where a parish becomes vacant during the year, or for pastoral imperative approved by the President. It is also be used with applications during the year from ministers coming from outside the Methodist Church of New Zealand. All Continuous Stationing appointments are to be processed by Mission Resourcing through the Stationing Workgroups and approved by the President.

Tauwi Strategy finalised a Continuous Stationing process for use by Synod Superintendents. This process includes advertising, timeframe and the connection of the process with the current stationing processes.

Tauwi Council of Conference Membership

Nominations and processes for Tauwi membership of Council of Conference and substitutes has been somewhat unstructured in the past few years. There has not always been consistency in applying the guidelines and criteria for nomination and membership, training, and the number and role of substitutes. At the August meeting, the Council of Conference Tauwi co-convenor proposed changes in the way Tauwi membership of the Council is processed.

The criteria for Tauwi Council of Conference membership has therefore been amended as follows:

- Nominations will be called each year for up to 3 new Tauwi members.
- The Tauwi Nominations Committee will recommend up to 3 new members of Council of Conference annually who will be substitutes/ trainees in the first year. These will be mentored by current Tauwi Council of Conference members.
- Tauwi Council of Conference members will then serve a term of 5 years on the Council after their first year in training.
- At the end of a Tauwi member's term they will be a substitute for two years.
- The Mission Resourcing Director not appointed as TEO will continue to be a resource person for the Council and may also serve as a substitute for the committee.
- The Tauwi Co-Convenor will be a member of the Tauwi Strategy meeting.
- All Tauwi members of Council of Conference are able to attend Tauwi Strategy. However there will be at least five Tauwi members of Council of Conference represented at Tauwi

Strategy (normally this would be made up of those who are also members of Tauwi Strategy).

- Copies of Tauwi Strategy and Council of Conference minutes will be sent to all Tauwi Council of Conference members, trainees and substitutes.

Tauwi Executive Officer

Tauwi Strategy have agreed to a trial role description for the Tauwi Executive Officer. This role description defines the difference in role between the TEO and the Directors. The Committee also affirmed the appointment of Aso Samoa Saleupolu to replace Nigel Hanscamp as Tauwi Executive officer following his agreed 3 year term.

Tauwi Strategy Facilitation

Since the formation of Tauwi Strategy from the General Purposes Committee, the facilitation of the Tauwi Strategy meeting has been done by the President and Vice President together with the Superintendent Development Division / Director(s) Mission Resourcing. Tauwi Strategy has examined its own life this year as well as the role of the TEO and the role of the Tauwi Facilitators, and has decided that it would be more helpful for the TEO, Directors, President and Vice President if the Tauwi Facilitators were to take a leadership role at Tauwi Strategy. Preparation for the meetings would be done in cooperation with the TEO, and facilitation could be effectively managed by the Tauwi Facilitators. Tauwi Stationing will continue to be led by the Presidential team with support from the General Secretary and TEO.

This will be trialled for meetings in 2009, with the intention of bringing a change to the Laws and Regulations to Conference 2009.

Ecology

The February meeting of Tauwi Strategy considered the Notice of Motion M from Conference 2007 encouraging the church to be more environmentally sustainable.

Tauwi Strategy asked that Synods report on their discussions regarding the Notice of Motion to the August meeting of Tauwi Strategy. Some Synods reported steps they have begun to take. The committee also affirmed that the issue was important enough to stay in front of the church, and suggests that it stay on the agenda of all boards and committees in the church. In considering the issue further Tauwi Strategy asks Synods to promote the use of the CASI Energy Audit. This is a detailed checklist which can be easily applied at parish and synod level.

Leadership and Human Sexuality

Tauwi Strategy had further discussion on Te Taha Maori's core question, "Will Tauwi accept a gay or lesbian person as President or Vice President?" In response to this question, Tauwi Strategy have advised Te Taha Maori that because there is no consensus within Tauwi at this time, Tauwi is unable to accept a gay or lesbian person for the office of President or Vice President.

Tauwi Strategy will continue to address questions relating to sexuality, diversity, multiculturalism and theology. Further work is to be done on this during 2009.

Lay Superintendency

Tauwi Strategy supports in principle that the office of Synod Superintendency be open to Deacons and Lay people.

The committee received several papers and notices of motion as well as responses from the Faith and Order committee for consideration. Tauwi Strategy noted that the close relationship between the concepts of 'covenant' and 'full connexion' needs fuller exploration.

Therefore Tauwi Strategy recommends that further work be undertaken by the Faith and Order Committee together with Law Revision in consultation with the wider church on this matter. The work undertaken should explore both what it means for a lay superintendent to be brought into full connexion, and any changes to the Laws & Regulations to open up eligibility for the office of Synod Superintendent to Lay people and Deacons.

Lower North Island Synod

The proposal to meld the Taranaki-Wanganui, Hawkes Bay – Manawatu and Wellington Synods has had a long gestation period and all necessary consultation has been undertaken.

The driving influence behind the move to a Lower North Island Synod is to stream-line administration and to enable the main focus to be mission for each parish as the primary place of mission, and for the synod to resource and encourage each parish to reach its full potential as a people and place of God's people sharing the Good News.

All three Synods agreed at a combined August Synod to ask Conference to amend Synod boundaries to create the Lower North Island Synod. The ideal is to have a full-time Superintendent, but funding issues have yet to be finalised.

Anticipating approval, a service of inauguration and induction for the Synod and officers is planned for early December.

Vahefonua Tonga

Vahefonua Tonga is working on establishing a mission to respond in the best possible inclusive, holistic manner to calls and challenges of Christ in the community.

It intends to work collaboratively with missions, social services and other bodies of the Methodist Church of New Zealand and other agencies. It is also exploring ways of working in partnership with both local and central government departments with relevant services.

Vahefonua is engaged in a process of wide consultation, education and promotion of this exciting development. Vahefonua had two education, training and employment expo's as part of this development.

Vahefonua acknowledges the prayers and support of all and also the generous support of the PAC Trust in this process.

Nominations

The Taiuiwi nominations committee processed nominations from Synods for:

- Taiuiwi Council of Conference members
 - Trainees / Substitutes: Thelma Efford, Mark Gibson and Viv Whimster
 - Members (from the substitutes list): Tevita Finau, Olive Tanielu, and Susan Thompson
- Council of Elders: Garth Cant

Nominations were also confirmed for:

- Taiuiwi 5+5 members: Tovia Aumua, Kilifi Heimuli, Susan Thompson, Desmond Cooper and Motekiai Fakatou
- Methodist representatives UCANZ: Tony Bell and Nigel Hanscamp
- Convenor Taiuiwi Nominations Committee: Rachel Masterton
- Taiuiwi meeting advisor: Bruce Anderson

Suggested Decisions:

1. That the report be received.
2. Conference acknowledges the contributions made by Alex Webster, Setaita Kinahoi Veikune, Kilifi Heimuli, Ron Gibson and Dawn Armistead on the Taiuiwi Strategy and Taiuiwi Stationing committee, as well as their work in Synod leadership.
3. Conference notes the changes to the membership criteria for Taiuiwi members of Council of Conference as in the report.
4. Conference asks that Hui Poari, Synods and Boards have an ongoing agenda item focussing on ecology matters relevant to their work.
5. Synod Superintendents and Lay Representatives are asked to promote the CASI Energy Audit as a tool for use by Parishes, Rohe, Hui Poari, Synods and Boards.
6. Faith and Order Committee and Law Revision are asked to further explore what it means for a Lay Superintendent to be brought into full connexion and bring recommendations to August Synods, Hui Poari, Taiuiwi Strategy and Conference 2009.

7. Conference notes that Aso Samoa Saleupolu will be Tauivi Executive officer from 2009.
8. Conference expresses appreciation to Nigel Hanscamp for the time and commitment he has brought as Tauivi Executive Officer to Conference, Tauivi Strategy and Tauivi Stationing.
9. Conference agrees that
 - a. for 2009 the Tauivi Facilitators will facilitate Tauivi Strategy.
 - b. Tauivi Strategy will bring recommendations to Conference 2009 for changes to the Laws and Regulations to this effect.
10. Tauivi Membership of Council of Conference will be: Tovia Aumua (Co-convener), Aso Samoa Saleupolu (Tauivi Executive Officer), Mary Caygill, Desmond Cooper, Motekiai Fakatou, Tevita Finau, Jan Fogg, Olive Tanielu, Susan Thompson, and one substitute for Barbara Peddie. Substitutes: Thelma Efford, Mark Gibson, Nigel Hanscamp, Kilifi Heimuli, Jessie Kerr, David McGeorge and Viv Whimster.
11. Tauivi members of Council of Elders will be: Diana Roberts, Kepu Moa, Garth Cant.
12. The Methodist Representatives to Uniting Congregations of Aotearoa New Zealand standing committee will be: Nigel Hanscamp (Director Pakeha Ministries) and Tony Bell.
13. The Tauivi Facilitators for 2009 will be: Lynne Frith and Paula Taumoepeau.
14. Tauivi Strategy Committee for 2009 will be: President Jill van de Geer, Vice President Ron Gibson, General Secretary David Bush, Tauivi Executive Officer Aso Samoa Saleupolu, Director Pakeha Ministries Nigel Hanscamp, Tauivi Facilitators Paula Taumoepeau, Lynne Frith, Principal / Director Trinity College (to be named), Peter Williamson, Rosalie Gwillam (Northland), Kenneth Smith, Christine Peak, (Auckland), Setaita Kinahoi Veikune, Tevita Finau (Vahefonua Tonga), Tovia Aumua, Lani Tupu (Sinoti Samoa), Prince Devanandan, Ian Faulkner (Manukau), Viv Whimster and one other to be named (Waikato), Jocelyn Boys, Tony Bell, Desmond Cooper (Lower North Island), Bruce McKeage, Alison Molineux (Nelson – Marlborough – West Coast), Bruce Anderson, Sue Spindler (Central South Island), Stuart Grant, Rachel Masterton (Otago – Southland), Peni Tikonaka, Niko Bower (Wasewase ko Viti kei Rotuma), Alan K Webster (Evangelical Network) and other current full members of Council of Conference not named in the committee, Mary Caygill, Motekiai Fakatou, Jan Fogg, Olive Tanielu, and Susan Thompson.
15. Tauivi Stationing Committee for 2009 will be: President Jill van de Geer, Vice President Ron Gibson, General Secretary David Bush, Tauivi Executive Officer Aso Samoa Saleupolu, Director Pakeha Ministries Nigel Hanscamp, Principal / Director Trinity College (to be named), Peter Williamson, Rosalie Gwillam (Northland), Kenneth Smith, Christine Peak, (Auckland), Setaita Kinahoi Veikune, Tevita Finau (Vahefonua Tonga), Tovia Aumua, Lani Tupu (Sinoti Samoa), Prince Devanandan, Ian Faulkner (Manukau), Viv Whimster and one other to be named (Waikato), Jocelyn Boys, Tony Bell, Ron Gibson (Lower North Island), Bruce McKeage, Alison Molineux (Nelson – Marlborough – West Coast), Bruce Anderson, Sue Spindler (Central South Island), Stuart Grant, Rachel Masterton (Otago – Southland), Peni Tikonaka, Niko Bower (Wasewase ko Viti kei Rotuma), Alan K Webster (Evangelical Network).

EVANGELICAL NETWORK

The Evangelical Network continues to provide a voice for those within the Methodist Church of New Zealand te Haahi Weteriana o Aotearoa who consider themselves evangelical in thought and deed: and we continue to broaden our base of contacts who are either In Association, Friends or Members of the Network.

All of our contacts have the opportunity to subscribe to E-fish, our fortnightly e-mail publication managed very capably by Rev Bill Clifford (subscribe at cliffordhouse@bigfoot.com), and receive a (very) occasional print publication, E-net, for which we have future plans...To get onto our mailing list for E-net or to make further enquiries, please write to Rev Alan K Webster P O Box 12-127 Beckenham Christchurch 8023.

The work of the Evangelical Network over the last calendar year has been on four major fronts:

1. Denominational work
2. Ecumenical work
3. Resourcing opportunities
4. Conference occasions

1. Denominational Work

Alan attends the Stationing and Strategy meetings, where he is a voice for presbyters and parishes with some kind of connection (connexion?) to the Evangelical Network. As noted above, sometimes this is a very loose and informal "associated with" relationship: at other times, it has been more formal, as Members of the Network. The role of the Network, as provided for by previous conferences, remains that of a denominational voice offering an evangelical perspective into the church's diversity.

2. Ecumenical Work

At various times throughout the church year, different evangelical meetings take place throughout the country from groups looking towards building bridges between churches and denominations on the basis of shared beliefs and understanding. The Evangelical Network provides for Methodist input into and feedback from such meetings, in formal and informal ways: for example, we represented the Methodist Church at the Vision Network at Waikanae, where evangelical churches from several different streams met to worship together, to consider ways of speaking together and to more effectively network for the future. We were also represented by our President Rev Brian Turner and Vice President Barbara Peddie.

From time to time representatives of other evangelical ecumenical bodies have made contact with the church: and it has been part of our continuing role to meet, for example, with Peter Bentley of the Assembly of Confessing Congregations within the Uniting Church of Australia, and with Dr Geoff Tunnicliff of the World Evangelical Alliance to hear what other evangelicals are doing around the world.

Part of our brief from Conference has also been to begin exploring a way forward towards healing the relationship between the Methodist Church of New Zealand and the Wesleyan Church of New Zealand. Our shared membership in the World Methodist Alliance and our desire to find a way forward that honours the reasons for our separation yet finds commonality towards some kind of ecumenical future has occupied some time and effort this year: and we look forward to having something to report. The Council of Conference is currently discussing what steps should be taken to progress relationship and will report to the 2008 Conference. As previously noted, it has been of considerable importance to establish some kind of working relationship here, in view of our shared involvement with the Wesleyans in running Equipt '09.(see below)

3. Resourcing Opportunities

The Evangelical Network takes seriously the idea of offering resources for reaching into our communities, and we have on many occasions been instrumental in formulating initiatives designed to equip churches for effective outreach.

Our biggest effort in this regard is the coming conference in Ngaruawahia planned for April 2009 called "Equipt 09: Connecting Communities To Christ" .This is to be run in conjunction with the World Methodist Alliance, and specifically the World Methodist Evangelism Institute, who will be coming across with an international team in order to share with us some of the ways in which Methodists worldwide have reached into their communities with the gospel. The aim of this week-long seminar is for New Zealand Methodists (and others...see below!) to come together and glean selected appropriate resources for their own contexts, from a broad base of offerings from the praxis not only of North America but internationally. To this end we will be offering plenary sessions from some of our own local speakers as well as international experts, workshops and seminars aimed at smaller specialist interest areas and giftings, culminating in a weekend spent in the churches in the field utilising new-found and fresh-honed skills towards connecting our communities for Christ.

Revs David Bush and Alan K Webster experienced a little of this in Atlanta in July 07 (see previous reports) and we invited the WMEI to come across and run a similarly themed and structured event here in New Zealand. Towards this end, we have joined up with the Wesleyan Church of New Zealand, also part of the World Methodist Alliance family, and with the Church of the Nazarene, who also trace their ancestry back to a certain pair of brothers! We have

been meeting regularly to plan this event: watch for more details, and keep the week following April 28th 2009 free for your participation, regardless of your label.

4. Conference Activities

At each conference, the Evangelical Network has a structured and an unstructured role. The structured role expresses itself in a formal Network Breakfast, for members and friends of the Network, held on the Sunday morning of Conference at a local church. At that meeting, we have worshipped together and prayed for the incoming president and vice-president, by the laying on of hands and the blessing of our colleagues. This has been warmly appreciated by all who have taken part.

We also hold on the Sunday evening a Resourcing Event, at which we aim to explore some of the different ways in which we can be relevant to our communities. We began this three years ago with a raconteur and artist, Mr Peter Majendie the following year we invited a folk-singer song-writer Roger White to sing for us in a local café and last year we met for nibbles while the Henderwoods, an eclectic alternative band played for us and spoke of Gen X expectations of church. This year we will be exploring multi-sensory worship with Rev Andre le Roux in a café somewhere...watch these spaces.

We have also offered Methodist artists a chance to display their work around a theme, and offer a prize of the entry-fee pool from a popular vote: this is proving to be very interesting and worthwhile, and we will continue this for future years. Again, watch these spaces: especially Touchstone and E-fish for advertisements!

Last year for the first time we extended an invitation to the newly formed Liberal Network to join with us to offer this resource: we all felt that this was an important gesture to make of mutual appreciation, demonstrating that we can still enjoy the company of people with whom we disagree!

The Evangelical Network provides important links and connexions inside and outside the body politic of the Methodist Church of New Zealand te Haahi Weteriana: we remain committed to the wider family of Methodists and to the call of Jesus to preach the gospel to all people groups everywhere, in every way possible and, as someone remarked somewhere, if necessary, to use words.

Rev Alan K Webster, Evangelical Network Superintendent

Suggested Decisions:

1. That the report be received.
2. That the Executive for 2008-9 be Rev Alan Webster, David White (Treasurer) Andrea Williamson, Rev Peter Williamson, Rev Marion Peterson, Rev Brian Peterson and Mr Graham Older.

NEW ZEALAND METHODIST WOMEN'S FELLOWSHIP ANNUAL REPORT FOR YEAR ENDING 31 AUGUST 2008

Malo e Lelei, Talofa Lava, Noa'ia e Mauri, Ni sa bula vinaka, Namaste, Taloha Ni, Kia Orana, Kia Ora.

As I complete my term of office as President, I feel it has been a privilege and a blessing to have been entrusted with the leadership role of Women's Fellowship. I thank God for this opportunity and my wonderful, supportive Executive team as we honour God and continue the work of MWF.

Sympathy

We recall with sadness, but also thanksgiving, members of previous National Executives who have died during the past year – Joan Shaw (Waikato/Thames), Dorothy Ford (Irvine) (North Canterbury and Waikato) and Rona Collins (North Canterbury). We honour the memory of their generous gifting of their talents and time for Fellowship. To friends and family, we extend our loving sympathy.

Communication

President's Letters continue to be sent out to Districts quarterly. The content of the newsletters is designed to offer readers a glimpse of what the National Executive is doing on behalf of the membership and also to provide a devotional segment. Where possible links are maintained through email contact, but some information continues to be sent through the postal system.

The World Federation of Methodist and Uniting Church Women publication "The Tree of Life" gives information on what is happening on the world scene. Unfortunately because the newsletters are shipped from the States, it is often many months before copies get out to Districts. Although there are four newsletters per year, at this stage we still have only received two. A continuing source of frustration!

Special Events

National Executive receives many invitations to annual meetings and events throughout the country. To avoid high travel costs for such occasions a local member is asked to represent MWF. This works extremely well and gives others opportunities to network with organisations at a National level.

Visits to Districts, Fellowship gatherings, sitting alongside amazing women either in their own homes or retirement villages, has been such a rich blessing – and no, I will not forget the men who have assisted in so many ways! This God-given privilege is one I will continue to cherish. Mostly accompanied by at least one other Executive member, our "team" has travelled to, and enjoyed fellowship in, all 19 Districts. It has been evident that a great deal of work has gone into giving us so many opportunities to not only be a part of your Fellowship gathering, but also to experience the beauty and uniqueness of each of our wonderful regions. I have visited towns I know I would never have had the opportunity to see and I pray that I may be able to return before too long. (What an admission from a "mainlander"!).

107 New Zealand Methodist Women's Fellowship members travelled to Tonga for the South Pacific Area Seminar of the World Federation of Methodist and Uniting Church Women from 13 – 19 September. (Units are usually allocated only 50 places) As Unit Leader I attended a "Weaving Together" programme 12/13 September. It was disappointing that the original date for the Seminar (late August) was changed. With Convention following on very closely after our return from Tonga considerable pressure has been put on Executive members.

Finance

Thank you to everyone who has contributed in a variety of ways to our annual fundraising. As Executive has travelled throughout New Zealand, we have been encouraged by the support from congregations for the fundraising efforts of MWF groups. The major focus of the APW/MWF Special Project was CWS partner, House of Passage, in Brazil. House of Passage is a programme giving young people living on the streets of Recife some choices for a different life. This Project attracted a 4:1 government subsidy.

The New Zealand focus was chaplaincy in state schools, the programme of the Churches Education Commission which aims to help young people make good life choices.

Funds for disbursement:

Special Project 2007/2008	\$33,459.29
Stamps and Coupons	\$3,597.26
Medical and Educational Fund	\$2,087.30

Recipients of these latter two funds will be confirmed at Convention.

Yet this is only part of the story – the total gifting of time, talents, love and energy of our membership is impossible to calculate. We are aware of the outstanding contribution of hundreds of extraordinary, ordinary women who sincerely, faithfully and practically live out their Christian faith. Members are committed to, and involved in the local Church, Parish and District, often initiating and maintaining programmes of caring and support which reach far into community.

Grants and Scholarships:

Friendship Scholarship Trust – \$4,950.00 was available and paid directly to Colleges for 12 students at the end of January.

Kurahuna Trust – 13 grants have been made this year, totalling \$7,800.00.

Smethurst Trust – Smethurst ... What is That?

To different people it means different things. To the sisters in the early days of Solomon Islands Missions isolation, it meant parcels packed by Mr and Mrs Smethurst. To the Methodist Women's Missionary Union it meant the Dominion Box Department Organiser from 1922, at the beginning of New Zealand responsibility for the Solomon Island Church, to 1945. From then up to 1981 it meant a gracious house on the waterfront at Kohimarama, in Auckland, left by the generosity of the late Smethurst couple for the use of missionaries, deaconesses and others as a place of holiday, relaxation and recuperation.

Following the 1982 MWF Convention held in Upper Hutt the Smethurst Committee was constituted to disperse interest received on the investment of \$269,000 - coming from the sale of the Smethurst home and property on Tamaki Drive, Auckland, which had been bequeathed to the Methodist Women's Missionary Union. That organisation later joined with the Methodist Women's Guild Fellowship to form the MWF. The Smethursts' wish was for their legacy to benefit the missionary work of the Church and those women working in our mission areas.

Twenty-five years later the outcome of that decision has encouraged, assisted and enabled so many women to achieve their dreams and aims of further education and missionary endeavours. \$NZ750,000 in grants has been made during this period to over 2000 women for many varying reasons including: Diaconate and Ministry, Home setting studies, training and counselling, management courses, volunteer work abroad, seminars for social workers, conflict seminars, international conferences, self supporting Presbyterate studies, assistance for retired missionary sisters, research, women in ministry, history of missionary women, Convocation, Clinical Pastoral Education, Kurahuna Fund, Maori Division, National Executive attending Conventions, Overseas Speakers to Conventions, attendance at WFM&UCW World Assemblies and Area Seminars.

Little did Mr and Mrs Smethurst know in 1922, as they dispatched their first gift box just how far their giving would spread and multiply! Their concern was for women in Mission situations and testimony to their generous gift is evidenced through other Units in the South Pacific Area being assisted to travel to the recent Seminar in Tonga. We continue to thank God for the Smethursts' mission-hearts and pray that all the grants made will be used in the spirit of the Smethursts' gift and for the glory of God.

This year 36 grants and koha have been made totalling \$22,041.50.

Our Vision: Convention this year marks a milestone in the life of MWF as Mrs Vaotane Samoa Saleupolu, from the Samoan Women's Fellowship District was commissioned as National President. Congratulations Vaotane! At a time when "traditional" Fellowship group numbers are shrinking and leaders have been exploring different styles of continuing the life and work of MWF, our Pacific Island sisters continue to build in numbers with many younger women moving into leadership roles. Fijian women too, are exploring ways of supporting and belonging to the MWF national body. Because of the structure of our Pacific Island churches in New Zealand, this is not as straightforward as the older Synodal District model. We are indeed richly blessed and well served by these women as they continue the vision.

We continue to maintain and strengthen our links with the World Federation sisterhood through attendance at Area Seminars, World Assemblies and subscribing to the WFM&UCW newsletter "The Tree of Life" published quarterly.

We also continue to maintain close links with the Association of Presbyterian Women.

SPECIAL PROJECT 2008/2009 – The major focus of the APW/MWF Special Project for

2008/2009 is to aid The Hearing Association of New Zealand's Communication Project. It is reported 400,000 New Zealanders have hearing loss. Monies raised will see us provide the relevant information about hearing loss to both our members and the general public. The Overseas Project is "Lauru – Our Land – Solomon Islands Women Face the Future". In establishing the Women's Programme, the Lauru Land Conference aims to give women new opportunities and the capacity to earn income and hold on to the land they know as Mother. (Lauru is the name now given to Choiseul) We acknowledge with thanks the support and help of CWS our partner for this part of the Project.

In conclusion, we thank all MWF members and the wider church fellowship for their loving prayers. What a wonderful journey my role has taken me on. As mentioned, I have spent time in each of the 19 Districts, accompanied by at least one other Executive member, and enjoyed Sunday worship and rich fellowship in both large and small churches. The warmth of the hospitality, the creative and innovative programmes, the caring and sharing and the support by congregations of Special Project services has been such an encouragement and affirmation of MWF/APW work. Yes, there have been challenges for each of us but as we have been there for the membership of our organisation, so we have been there for each other. Together with your help MWF can continue to be "Women Making a Difference".

Our love and prayers surround Vaotane and Executive members as they continue the Fellowship journey! May you too, be blessed as the work, witness, ministry, education and outreach continues.

A Blessing

Go as far as you dare,
For you cannot go beyond the reach of God
Give as extravagantly as you like,
For you cannot spend all the riches of God
Care as lavishly as you are able,
For you cannot exhaust the love of God
Keep journeying as a servant,
For God will always be with you.

– *From A World of Blessings, Canterbury Press*

Lynne Scott
Sheila Pinkham
Beth Hickman

Valmai Horlor
Joan Hawley
Late Rona Collins

Leatrice McIntyre
Ofa Giblin

Rita Reid
Ruth Le Couteur

WASEWASE KO VITI KEI ROTUMA

'Ni sa bula vinaka,, Noa' ia e Mauri, Kiaora, Talofa lava, Malolelei, Greetings'

Acknowledgement

We do acknowledge the enormous support and contribution that 'Tehahi Weteriana O Aotearoa had offered and continue to offer to the ongoing development of Wasewase ko Viti kei Rotuma e Niusiladi. We have grown from strength to strength in our membership and also in the structures that have been established to help us move forward in to the future. Without your support, this could not have easily been achieved. 'Vinaka vakalevu'.

Membership

Our members are represented in terms of the churches we have in our various regions. Our Executives are working hard to ascertain and confirm the actual memberships as of to date. There is an estimate of 600 active members around the nation let alone those who are passive members and have yet to be registered.

It is encouraging to note that over the year, there has been additional TWO more Congregations; namely Rotorua and New Plymouth Fijian.

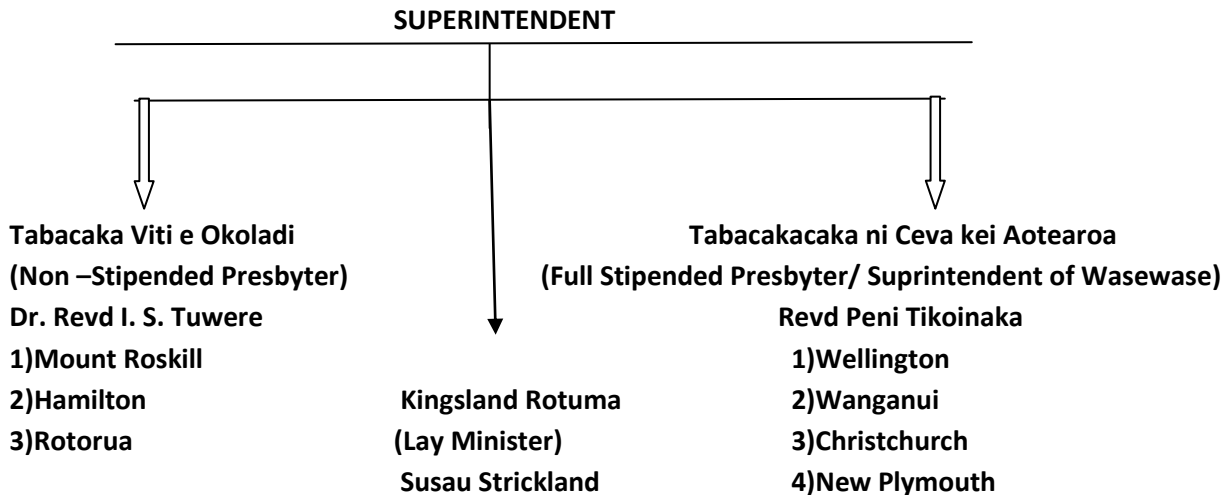
In total, the Wasewase ko Viti kei Rotuma e Niu Siladi are made up of members from:

i) *Mount Roskill*

- ii) Kingsland Rotuma
- iii) Hamilton
- iv) Wesley Wellington,
- v) Wanganui
- vi) Christchurch
- vii) New Plymouth
- viii) Rotorua

Structure:

Wasewase ko Viti kei Rotuma e Niu Siladi



Pastoral Visit to Kyber Pass: Revd Peni Tikoinaka as the Superintendent, has made the first call of visiting and listening to our Kyberpass members in an effort to convince them that we all joined together as members of the Wasewase. Members have expressed their interests and willingness but to continue to engage in further dialogue.

Property: Auckland Fijian Congregations have created history by successfully buying a church building and the piece of land on which it is seated, which we can proudly call, our very own. It is situated in Onehunga. This is the end result of years and years of hard work, and enormous amount of sacrifices and savings. It is only the first and not the last for the future developments of Wasewase ko Viti kei Rotume e Niusiladi.

Strategy:

1. Goal - A Vision of FORMING A SYNOD by 2012.
2. Critical need - One or two more Fijian Presbyters.

As the only full time presbyter, Rev. Peni is finding it a very great challenge to look after Tabacakacaka ni Ceva [geographical locations(lower North and Upper South)] and the affairs of Wasewase ko Viti kei Rotuma e Niu Siladi. One can guess how much time Revd Peni has for his family, if any?

Note: All members of Wasewase ko Viti kei Rotuma are full of enthusiasm and eagerness to move forward to the future as an integral part of Tehahi Weteriana O Aotearoa. Our strength is the commitment or our youths in their participation and also taking leadership roles in the life of Wasewase.

It is our prayer that God through the power of the Holy Spirit will guide and bless Conference, 2008 in all it's deliberations.

Our best wishes also goes to Manukau Synod for hosting the 2008, New Zealand Methodist Conference.

Vinaka Vakalevu.

Unaisi Tikoinaka, Assist. Secretary